

Suggested AutoCAD Options Settings for AutoCAD Mechanical 2008

The following are suggested settings for AutoCAD Mechanical. This document was created based on the 2008 release of the software. They are also typical for the 2004 thru 2007 releases, though there are some variations. These settings are accessed through the Options dialog box (Tools > Options).

This document only looks at the AutoCAD Mechanical Options settings. The settings for vanilla AutoCAD aren't discussed here. These are settings have worked well for solutions engineers at Synergis.

Many settings in the Options dialog box display a drawing file icon:

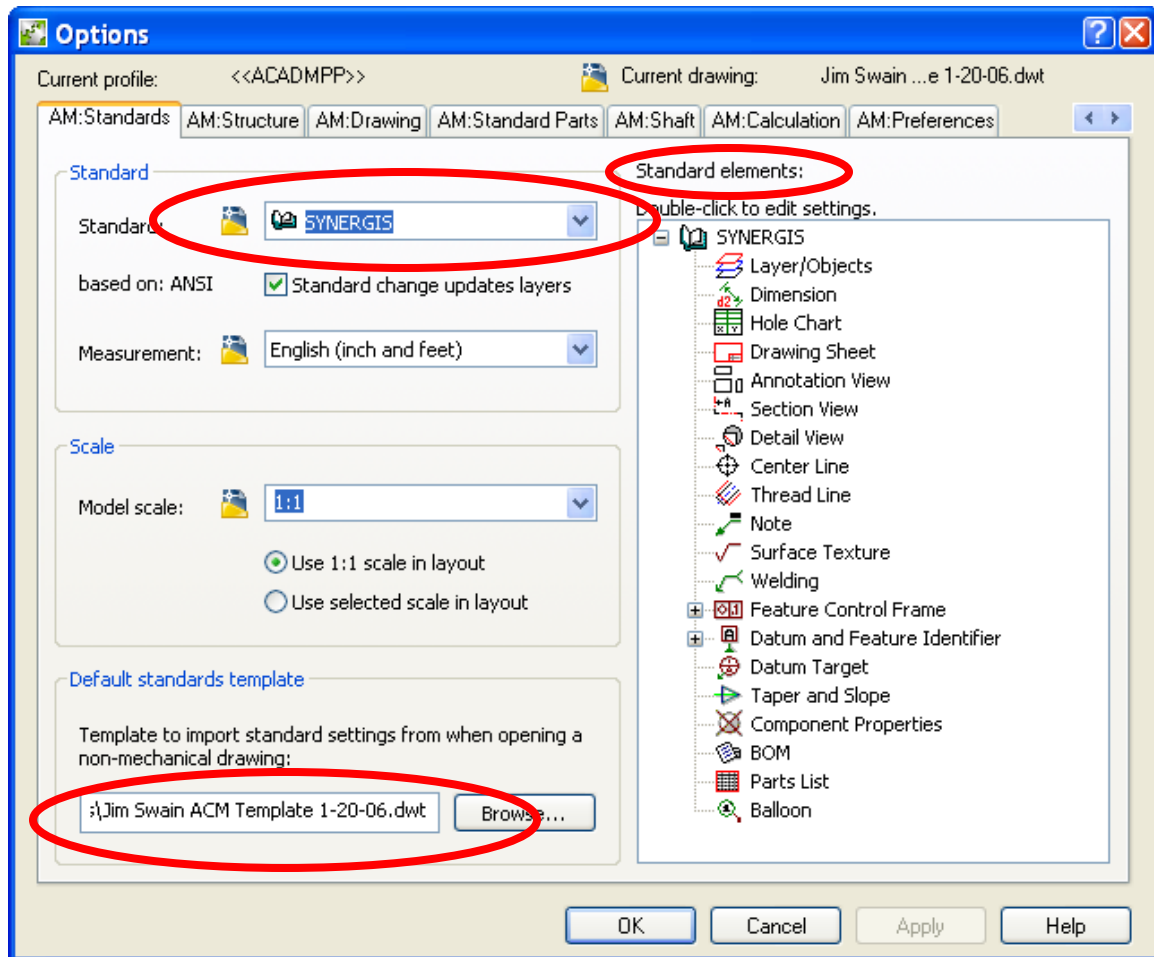


This icon indicates that the setting is saved in the individual drawing files. The current drawing file name is shown in the top right portion on the Options dialog box header:



These should be set in your company or personal template file. Then any new drawings created from those templates have the desired value.

AM:Standards



This tab controls what drafting standards are available, and applied in the current drawing. Several settings should be changed in this dialog box:

1. Standard
2. Default standards template
3. Standard elements
- 4.

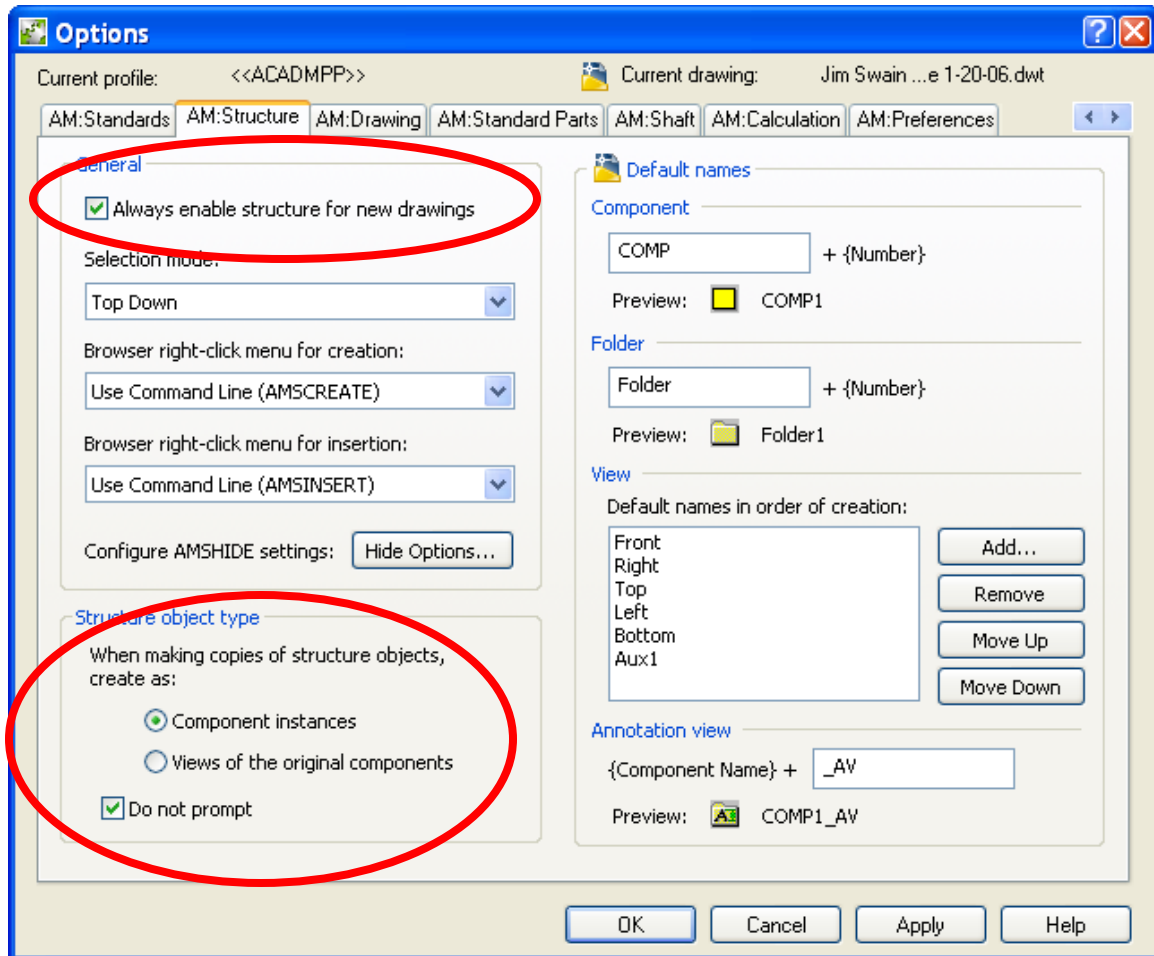
The active standard should be named for the company or division. This will identify the active standard elements, as shown in the right side of the dialog box.

For companies doing work for different customers, each with different CAD drafting requirements, there can be a standard saved for each customer. These standards could be saved in an overall company template.

That same template should be referenced in the **Default standards template** portion of this dialog box. (This file would then be referenced when an AutoCAD file is opened into Mechanical for the first time.)

While all the standards elements should be reviewed and tweaked to meet individual company needs the **Layer/Objects, Dimension, Balloon, Parts List** and **BOM** elements deserve extra attention. These are areas that are often integral to each company's unique personality.

AM:Structure



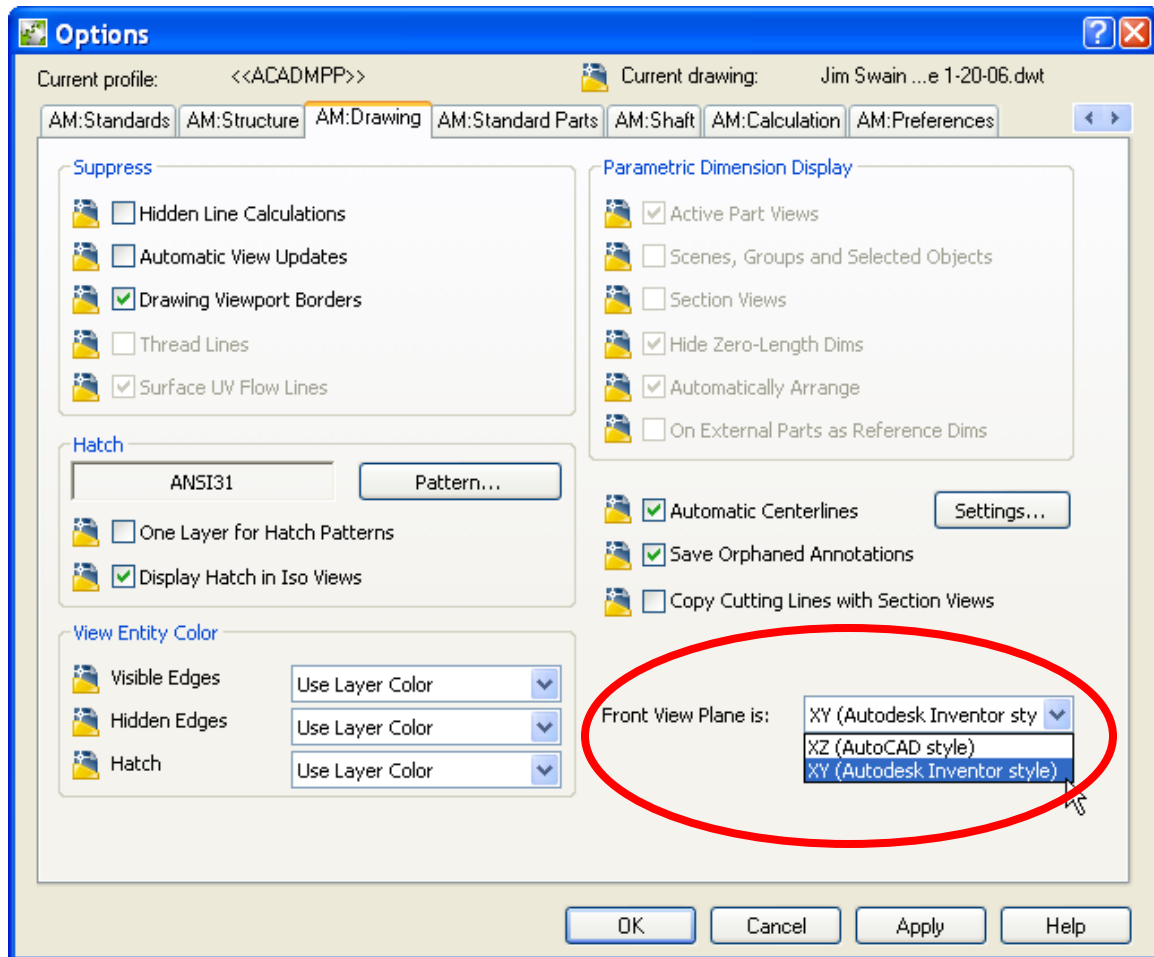
Companies using Mechanical's Structure functionality for parts and assemblies should check the **Always enable structure for new drawings** box.

With structure enabled work in the **Top Down** selection mode. This allows the first click on a line to select the assembly or part that a line is associated with, rather than the line itself.

Also turn the **Component instances** and **Do not prompt** options on for copying structure objects. This places additional quantities of parts or subassemblies via the **Copy** command by default. (Additional views of existing parts can still be added from the Browser.)

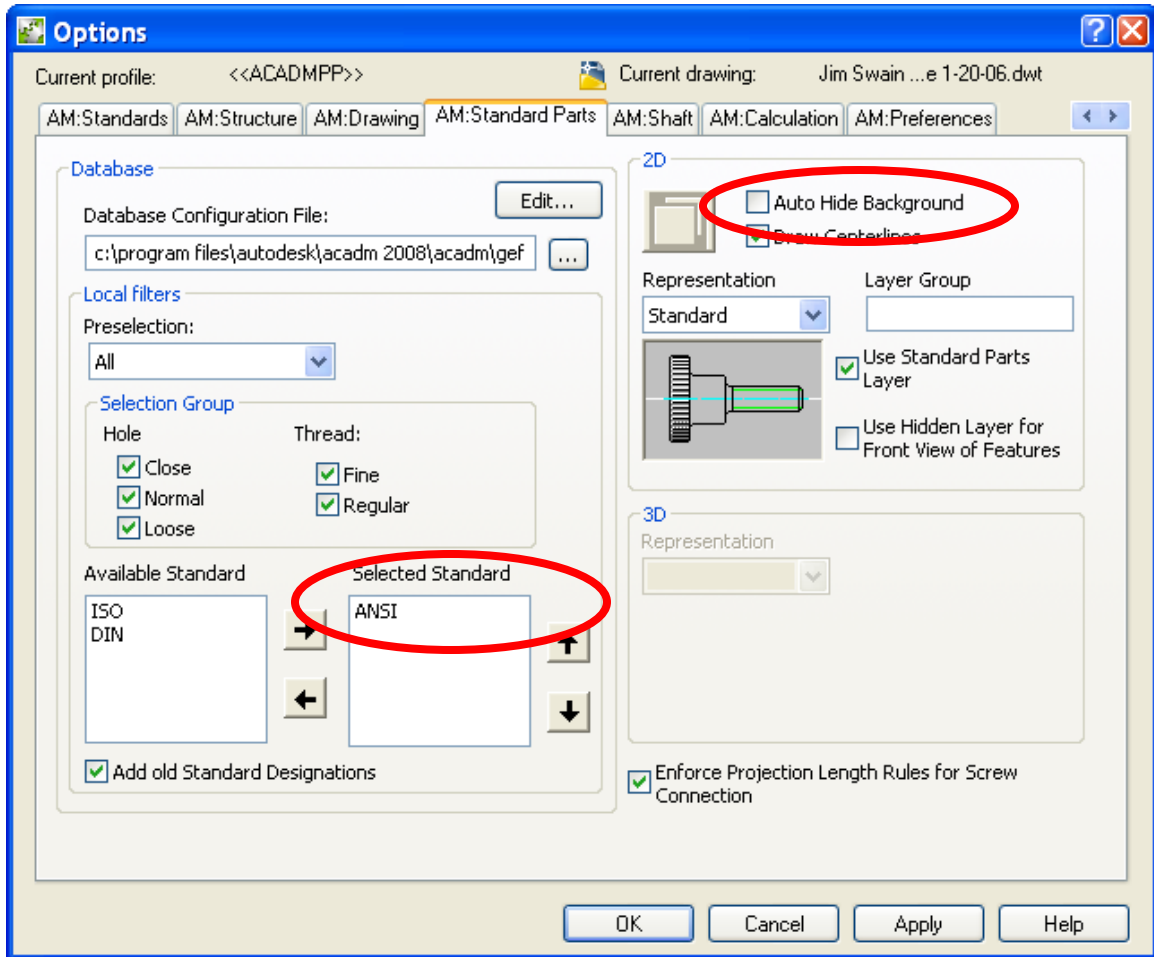
Note: The default view name order was changed in Mechanical 2008. Front and Right views are now ahead of Top in the order of creation. In earlier releases this order had to be changed to have the Front view first.

AM:Drawing



This tab is used for Inventor Link files, therefore the Front View Plane definition has been changed to **XY (Autodesk Inventor Style)**.

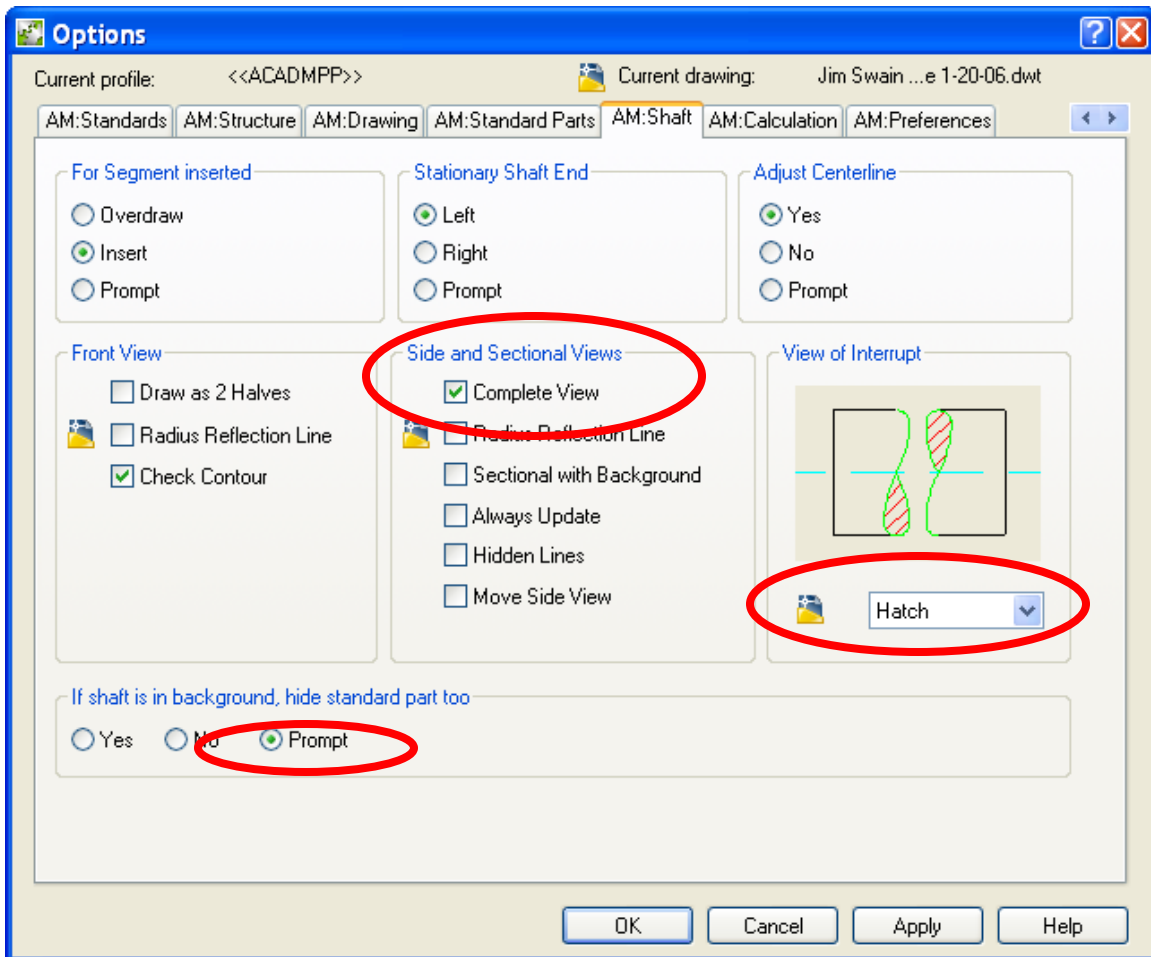
AM:Standard Parts



The **Selected Standard** list has been edited to only show ANSI standard parts. This increases performance and productivity when working on projects that only need ANSI parts. The other available standards can easily be activated at any time.

The **Auto Hide Background** option has been unchecked. This prevents Mechanical from assuming that any newly inserted standard parts are automatically “in front” of existing geometry. The associative hide or 2D hide commands can still be used change the display of hidden objects.

AM:Shaft

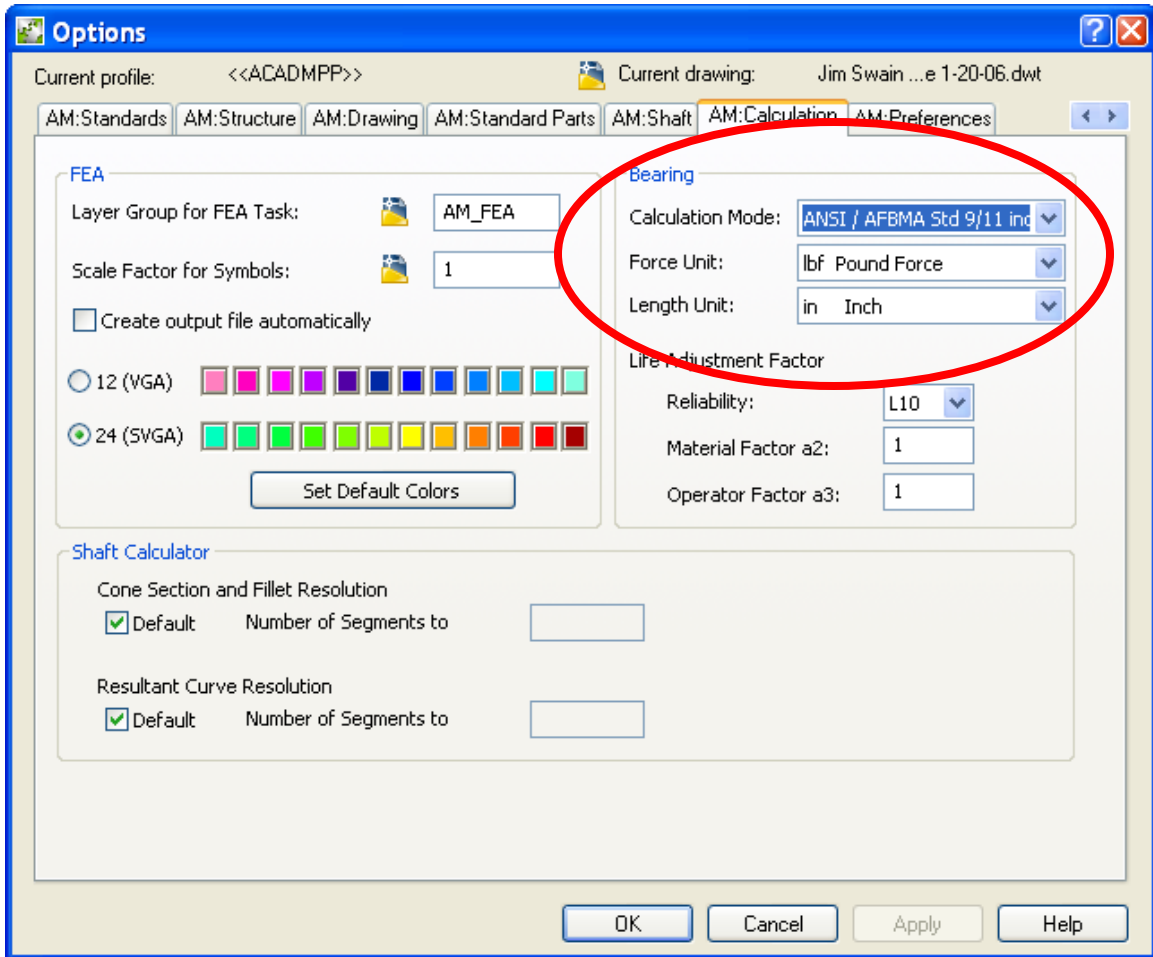


The **Side and Sectional Views** > **Complete View** option has been turned on. This will draw complete gear profiles in any side or sectional views.

The **View of Interrupt** choice has been changed to **Hatch**. This gives the typical ANSI cylindrical break symbol.

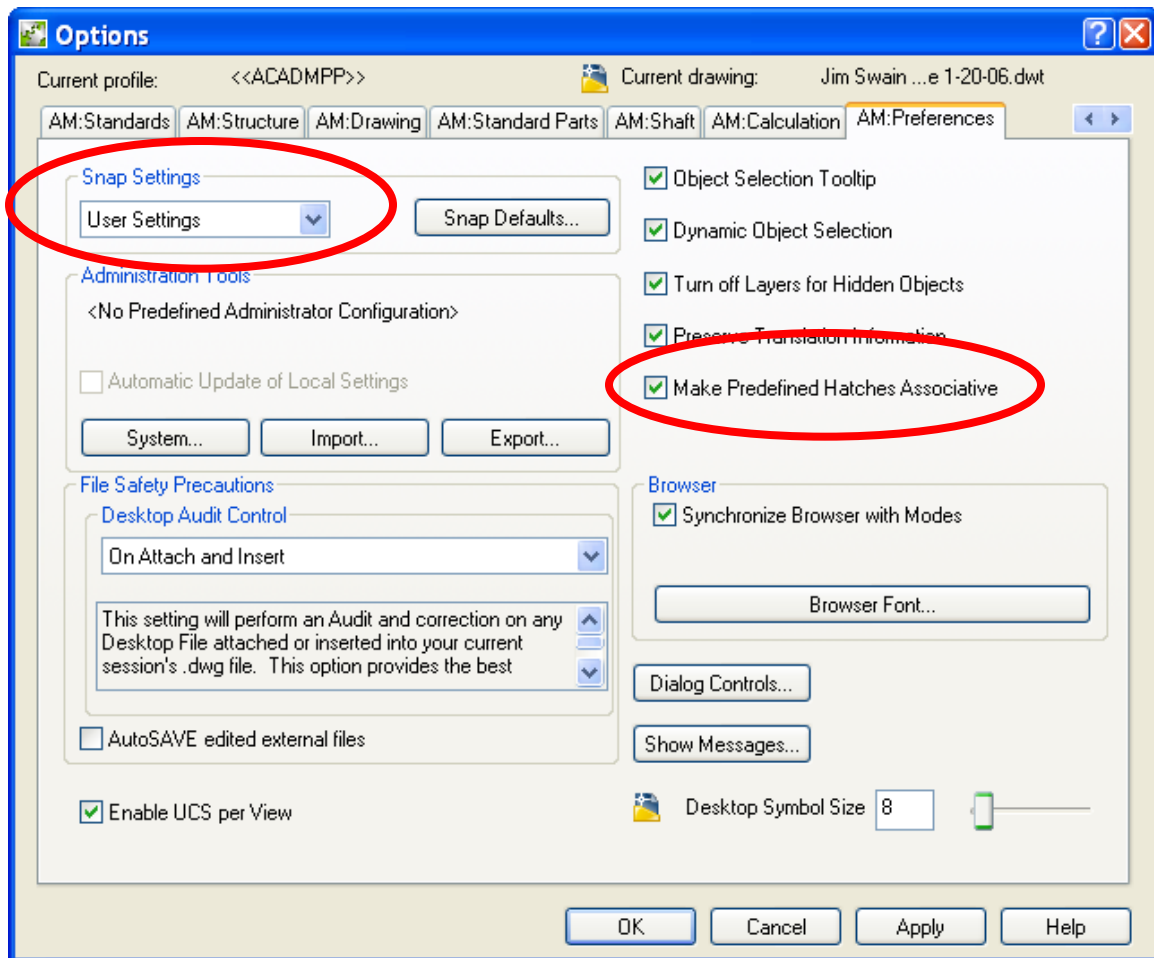
Prompting has been turned on for background shaft standard parts.

AM:Calculation



The bearing calculation options have been changed to reflect typical “English” unit choices.

ACM:Preferences



The **Snap Settings** have been changed to **User Settings**. This allows Power Snap settings to recognize OSNAP changes made using the status bar OSNAP button.

The **Make Predefined Hatches Associative** option has been turned on.

These suggestions incorporate many of the changes in the user interface. Some were in R14 and earlier versions. A number were introduced in R2000. Options are added and removed in each new release. When new versions are installed take a look at the Options dialog box and see what new tools might help you.