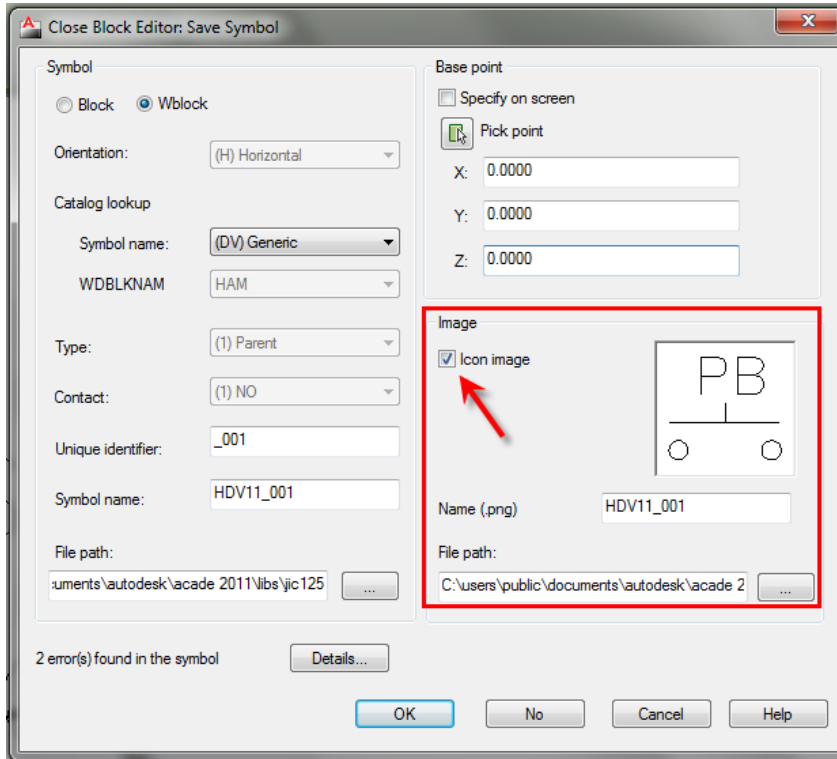




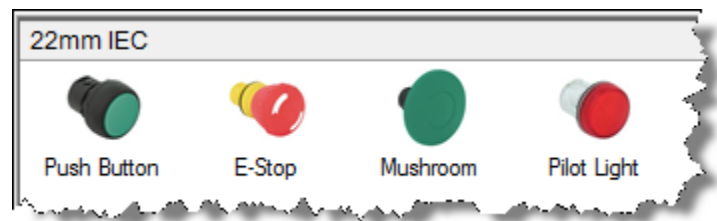
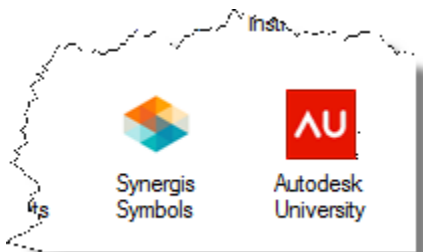
# Menu Icons can be more than CAD Images

Todd Schmoock

In AutoCAD Electrical Icon Menu images can be added and link to custom symbols using the Icon Menu Wizard. The images are automatically created when using the Symbol Builder. The option to create this image is located in the Close Block Editor: Save Symbol dialog box which is activated after selecting Close Block Editor while in the Symbol Builder:



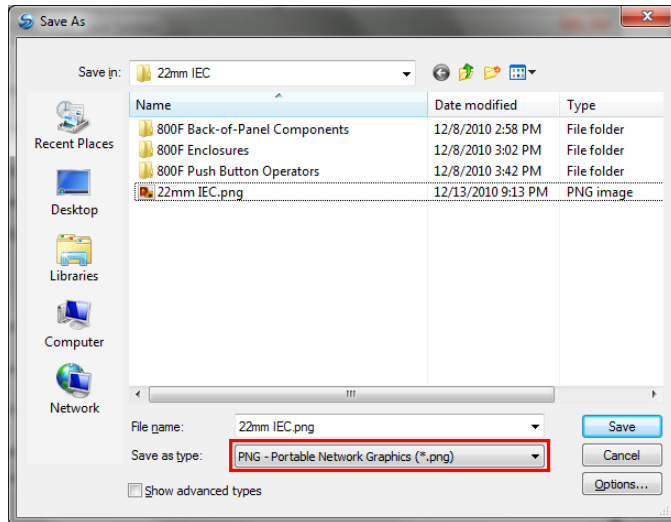
However, the image automatically created when using the Symbol Builder does not have to be used. Any image can capture and saved and use to identify the menu symbol, or category of symbols. For example, these images were captured from web sites and used in place of the Symbol Builder generated image:



Simply visit the vendor website and find the image needed and capture it. Save the image as a png file which is a Portable Network Graphics file. Technically any bmp file could be renamed to a png, but then the file size will be large. The best way is to use an image capture software. There are several

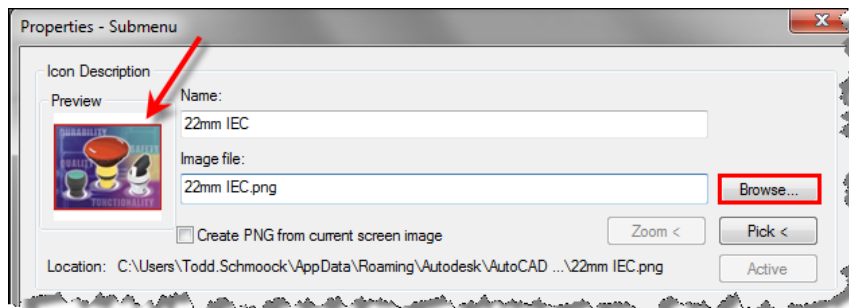


which are inexpensive and worth every penny spent. With this software several tasks can be performed, each image in this document was captured using one, but the option needed here is to do a Save As png:

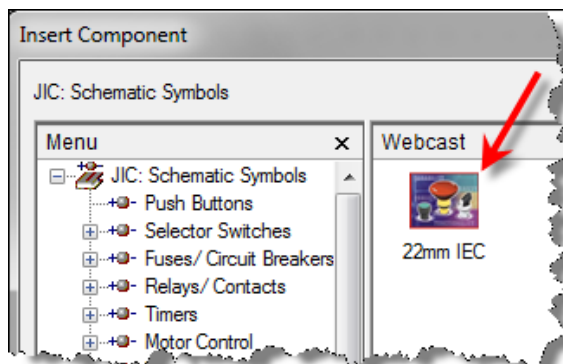


The best procedure is to save the png image file in the same location at the symbol drawing this will make it easier to manage and find the files when changes are required.

Now start the Icon Menu Wizard and select the .dat file to edited. Locate the link which needs to have this image and create New Component, New Submenu, or edit an existing one by right-clicking and selecting Properties. Select the Browse button and navigate to where the icon was saved and select. Click Open in the dialog box to add and verify the preview is correct.



Select OK in the Properties dialog and OK in the Icon Menu Wizard. It's time to verify if it looks the way it should. Start the Icon Menu tool navigate to the correct menu. If it looks good it's time to work on the others.





By capturing images which better represent the component represented in the Icon Menu it will be easier, and faster, to find the symbol that needs to be inserted. The cad images created be good in some cases or until a captured image can be updated, but if too many cad images are used they tend to blend together and users spend too much time reading the text until users are used to where the symbol is located. It really helps when it's for a symbol that is not used often. As the saying goes "a picture says a thousand things".