



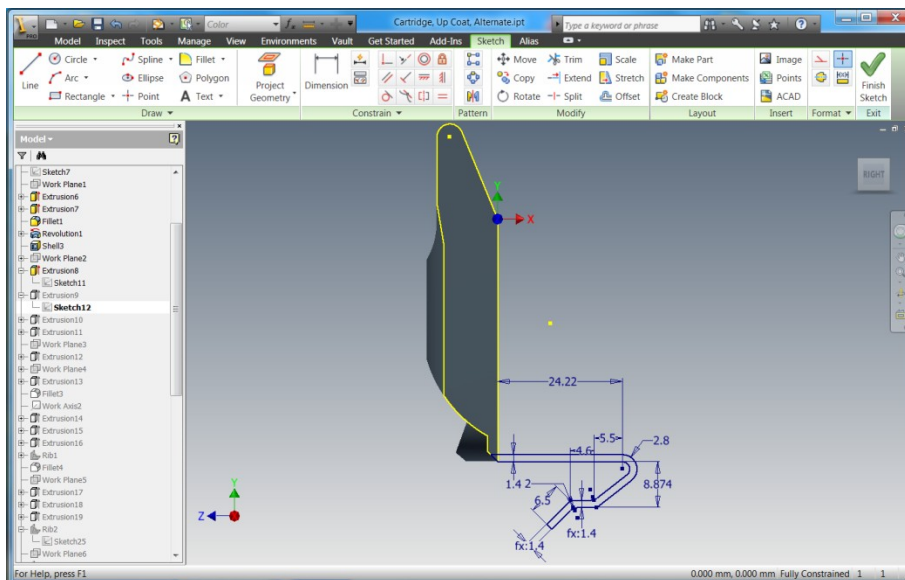
# Customizing Inventor's Ribbon

Jim Swain

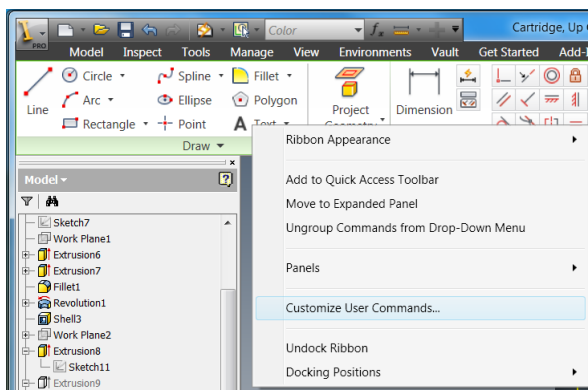
It is very easy to add a new panel to any tab in Inventor's ribbon user interface. This panel, appropriately names **User Commands**, can contain any desired command. Each tab can have its own user command panel. So commands can be tailored to the specific action.

Here's how it works:

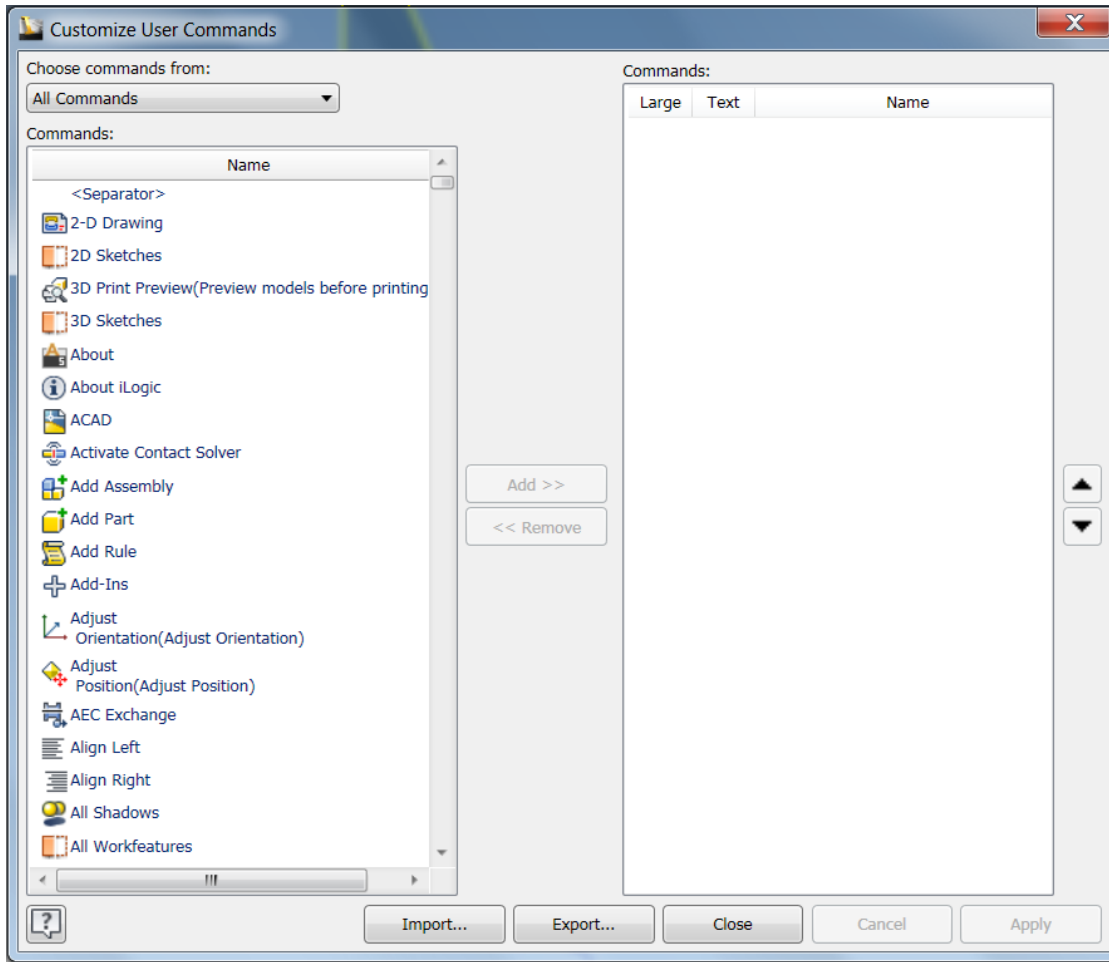
1. Go to the desired tab, such as the 2D Sketch tab shown here:



2. Right click in the ribbon and select **Customize User Commands...**



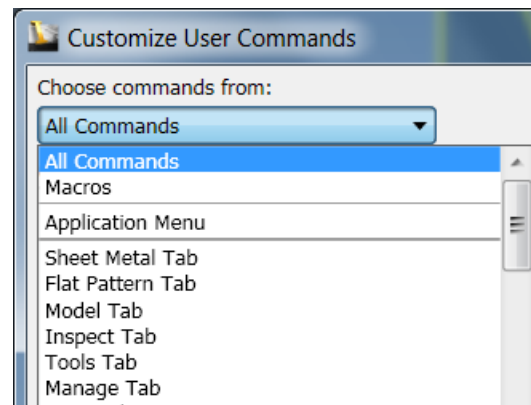
A new dialog box pops up, allowing you to select the commands for the new panel.

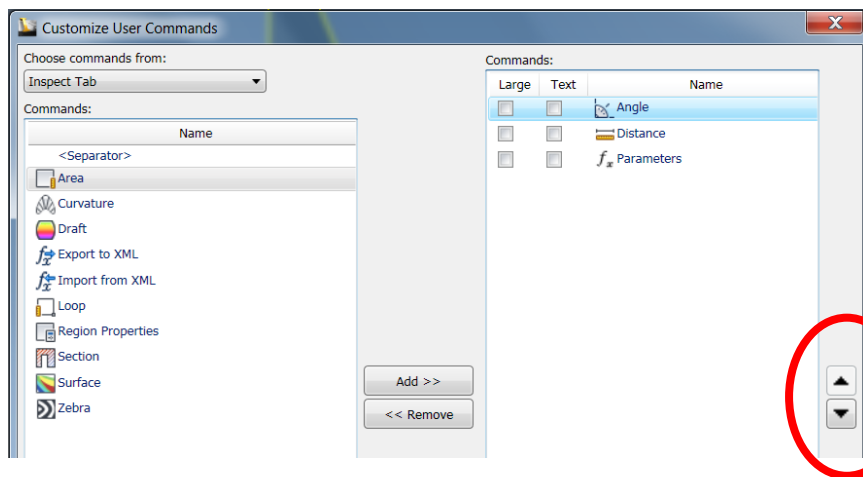
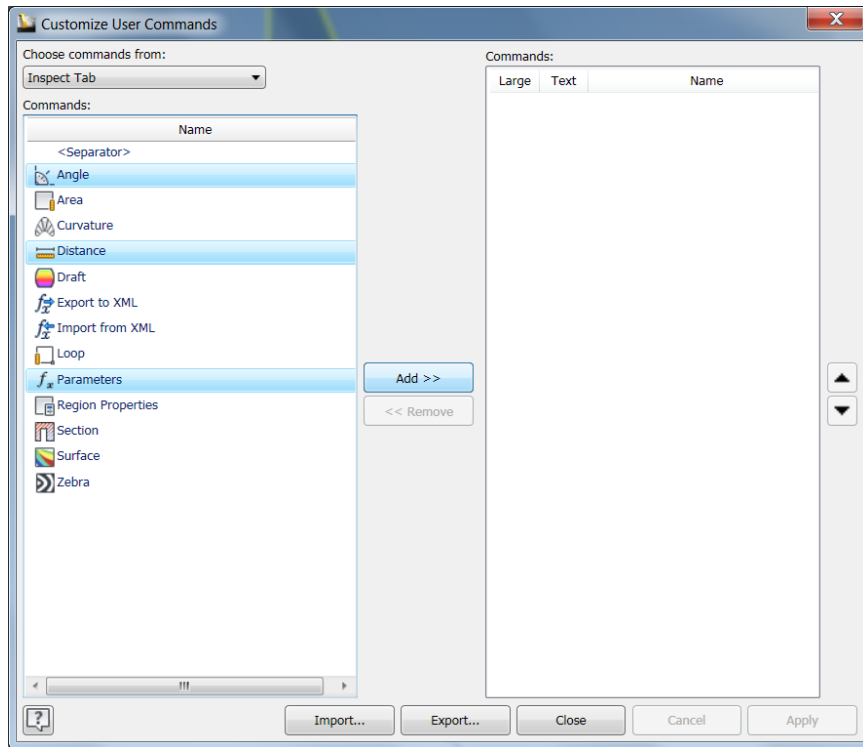


The commands can be filtered with the drop down list in the upper right of the dialog box.

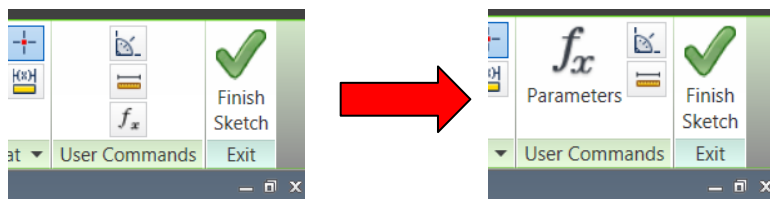
3. Highlight a command in the left hand pane, then use the Add >> button to move the command to the right hand pane.

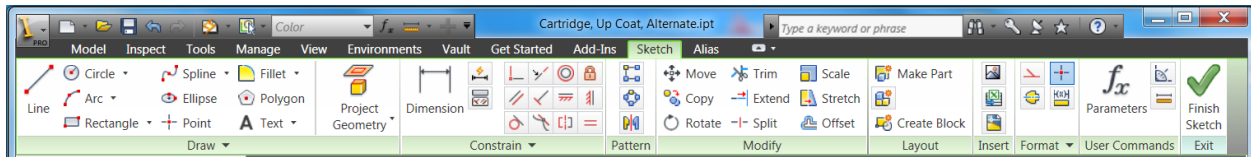
Note: You can use the shift and control keys to select multiple commands and move them in a group. Add as many commands to the panel as you want. They will be stacked in up to three rows of tools.





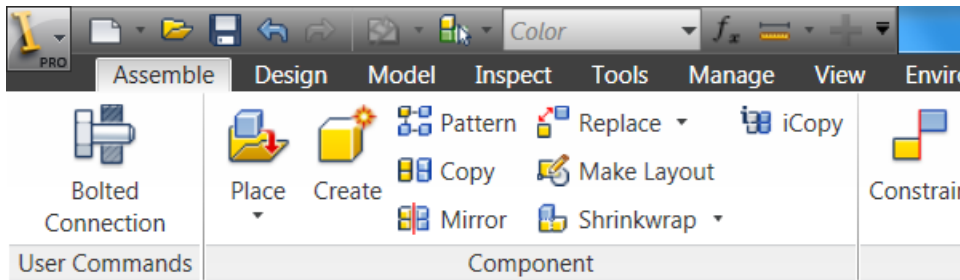
4. Use the arrows on the right side to change the order of the commands.
5. Turn on the check marks for **Large** icons and **Text** for commands you want to emphasize. Large icons won't stack.





Once you leave that tab that User Commands panel isn't displayed. So create a different panel for each tab and include the commands that make sense for that tab. For example I like having quick access to the bolted connection tool whenever I am in an assembly. I could add it to the Quick Access Toolbar, but I would like a large icon that is easy to find.

In the Assemble tab I create a User Commands panel and add the Bolted Connection tool. I save my changes, and then exit the dialog box. Finally I drag the User Commands panel to the far left of the Assemble tab's panels.



One last note: In the Customize User Commands dialog box there are Export and Import buttons at the bottom of the box. Save a copy of your panels to a safe place once you have perfected them.

