



Changing AutoCAD Mechanical's Layers to Match Existing Standards

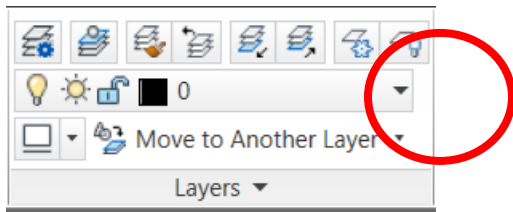
By default AutoCAD Mechanical places specific objects, such as dimensions and centerlines, on specific layers. These layers are created on the fly, and have names such as AM_0, AM_5 and AM_8.

The names and properties of these layers can be confusing, and slow down the adoption of AutoCAD Mechanical in an existing AutoCAD installation. However these names and properties can be changed to match existing AutoCAD preferences. Here is how:

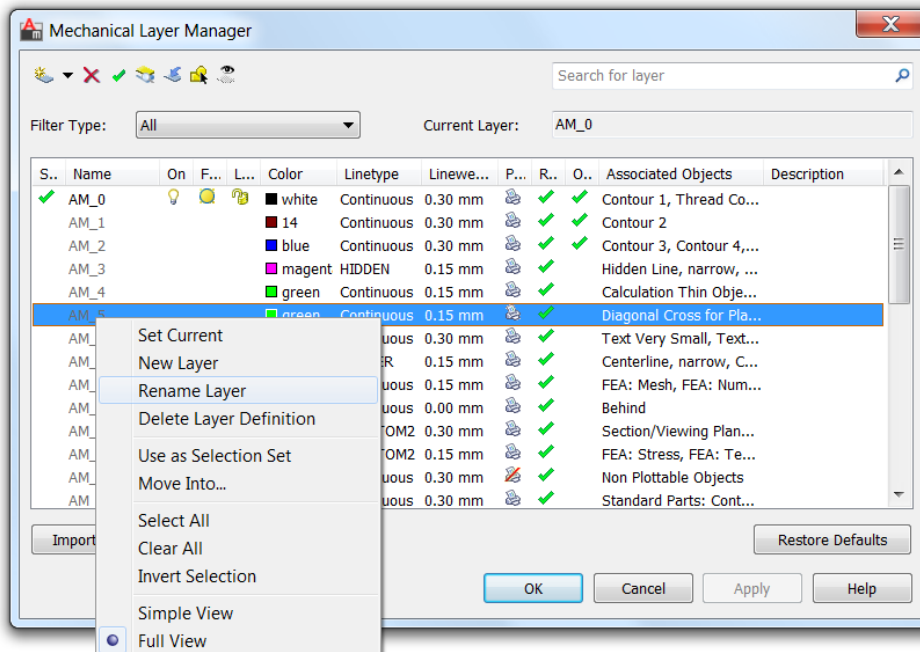
*Note: These changes **must** be done in AutoCAD Mechanical. If regular AutoCAD tools are used to change these settings then AutoCAD Mechanical will ignore the layers and use AM_5, etc.*

Layer Setup

To make AutoCAD Mechanical layers match existing company standards start the AMLAYER command.

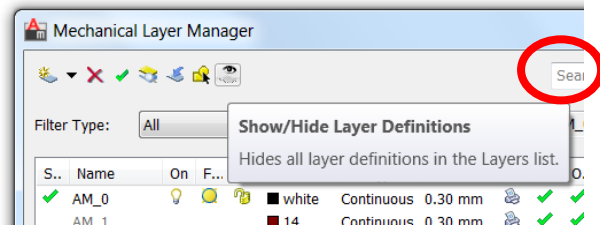


Right click on a layer definition and choose **Rename Layer**. Change the layer names to match the equivalent AutoCAD layer name. For example: rename **AM_5** to **Dimensions**. Make any desired changes to the colors, linetype or line weight settings as well.

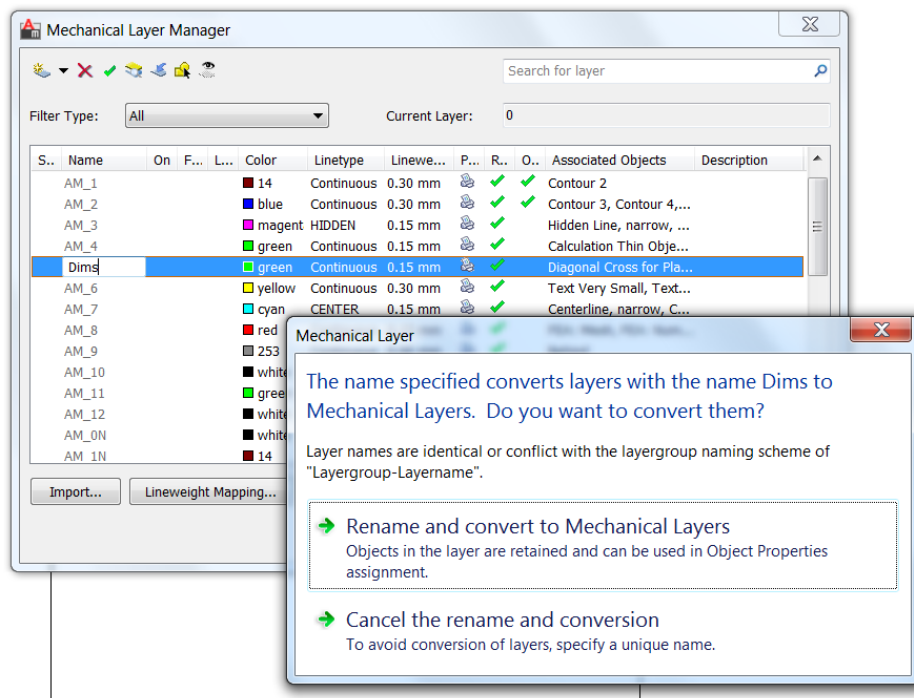




Note: If you don't see all the layers shown in the image click on the Show/Hide Layer Definitions button.

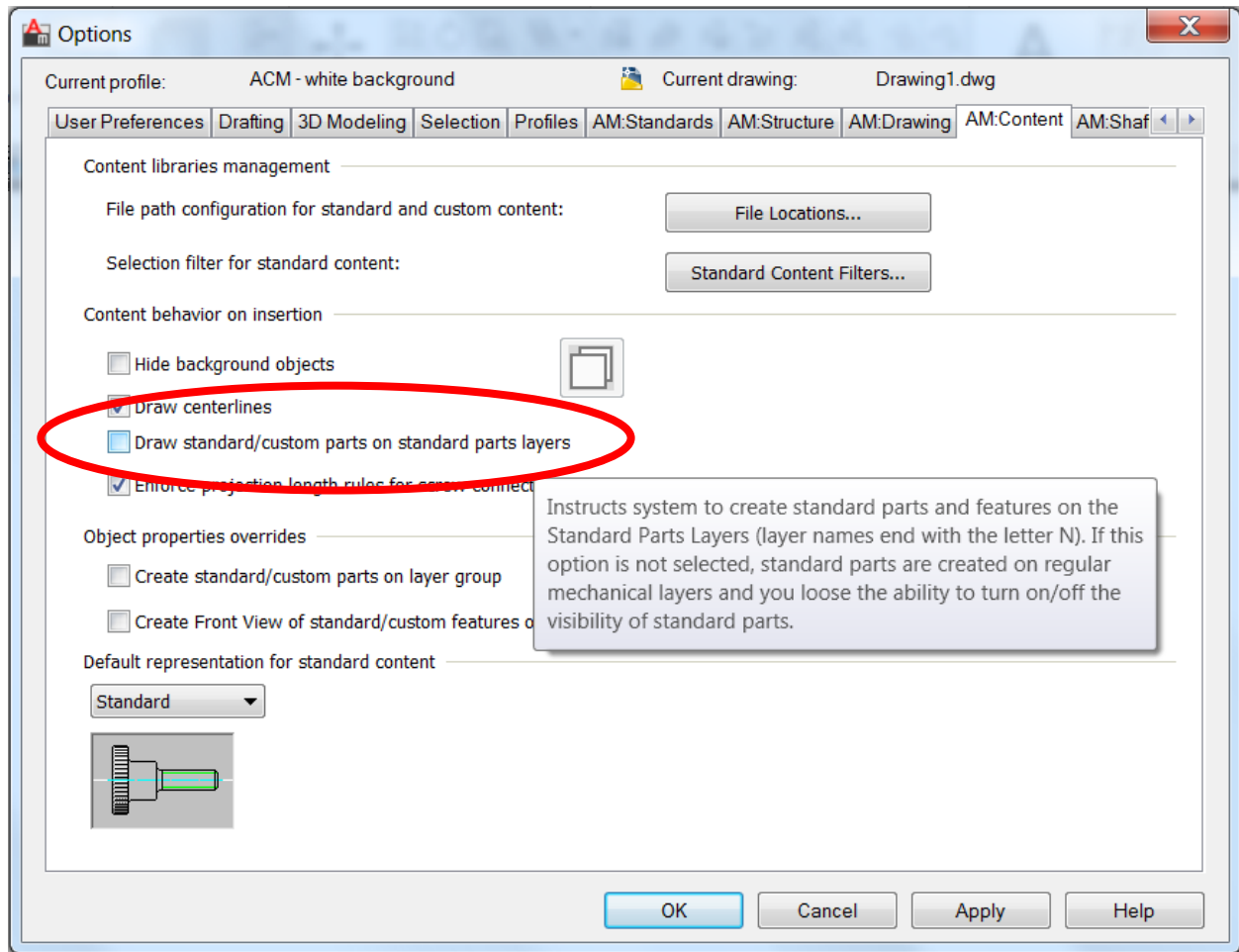


When you change a Mechanical layer's name to match an existing layer you get a warning message. Choose the **Rename and convert** option to merge the layers. Be sure to change any other layer properties, such as color, as well.



Note: Layer definitions can be copied from other drawings with the **Import** button in this dialog box.

Do this for layers AM_0 thru AM_12 plus AM_BOR, AM_CL, and AM_VIEWS. The layers AM_ON thru AM_12N are used when the **Draw standard/custom parts on standard parts layers** option is checked. This places any library part on the equivalent "N" layer.



Here are some suggested names for the layers:

Mechanical Layer Name	Suggested new name
AM_0	Object
AM_1	Object-thin
AM_2	Object-thick
AM_3	Hidden
AM_4	Auxiliary
AM_5	Dimensions
AM_6	Text
AM_7	Center
AM_8	Hatch
AM_9	Invisible-behind
AM_10	Section
AM_11	Analysis
AM_12	Non-plotting
AM_BOR	Border
AM_CL	Construction
AM_VIEWS	Viewports



Mechanical Layer Name	Suggested new name
AM_0N	STP-Object
AM_1N	STP-Object-thin
AM_2N	STP-Object-thick
AM_3N	STP-Hidden
AM_4N	STP-Auxiliary
AM_5N	STP-Dimensions
AM_6N	STP-Text
AM_7N	STP-Center
AM_8N	STP-Hatch
AM_9N	STP-Invisible-behind
AM_10N	STP-Section
AM_11N	STP-Analysis
AM_12N	STP-Non-plotting

Make these changes in your template file, and make the Object layer the current layer. Now any new drawing created from that template will have the desired layer definitions and the Mechanical contour layer will be active.

Specify the same template files as the Default template file and any existing AutoCAD drawing opened with Mechanical for the first time will use these layer definitions.