
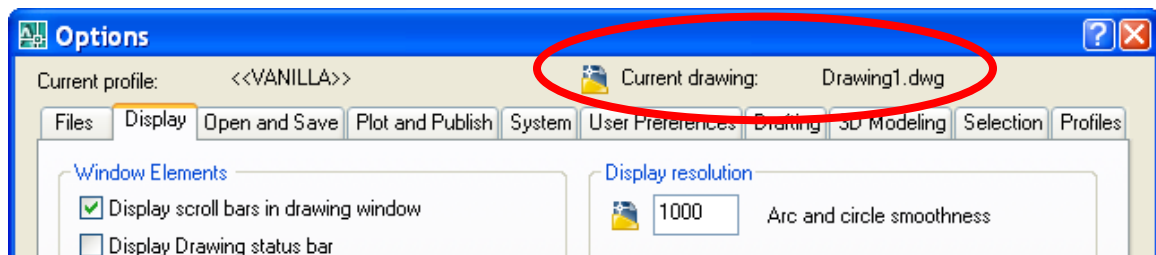


Suggested AutoCAD Options Settings for AutoCAD 2008

The following are suggested AutoCAD settings for typical 2D drafting work. These settings are accessed through the Options dialog box (Tools > Options). These are settings have worked well for solutions engineers at Synergis.

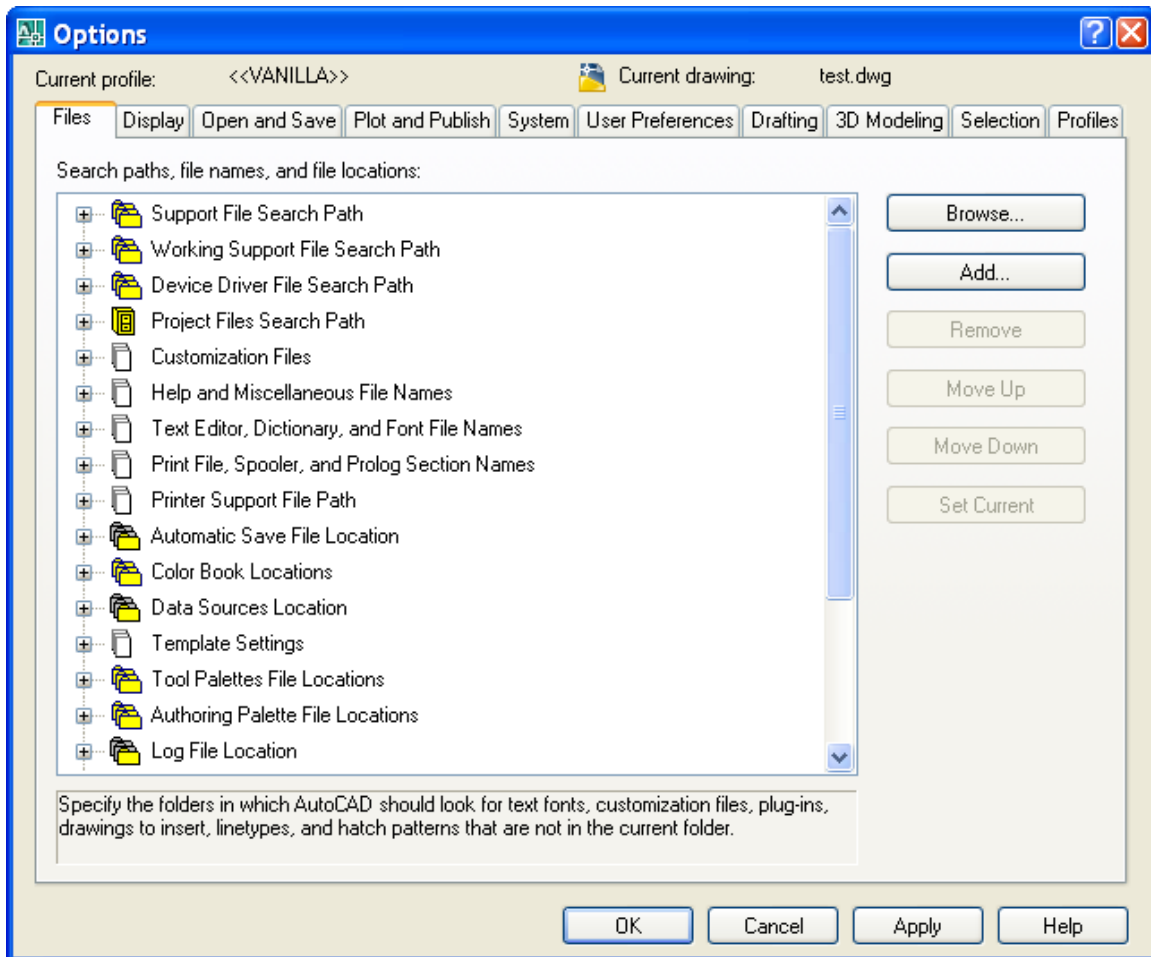
Many settings in the Options dialog box display a drawing file icon: 

This icon indicates that the setting is saved in the individual drawing files. The current drawing file name is shown in the top right portion on the Options dialog box header.



These should be set in your company or personal template file. Then any new drawings created from those templates have the desired value.

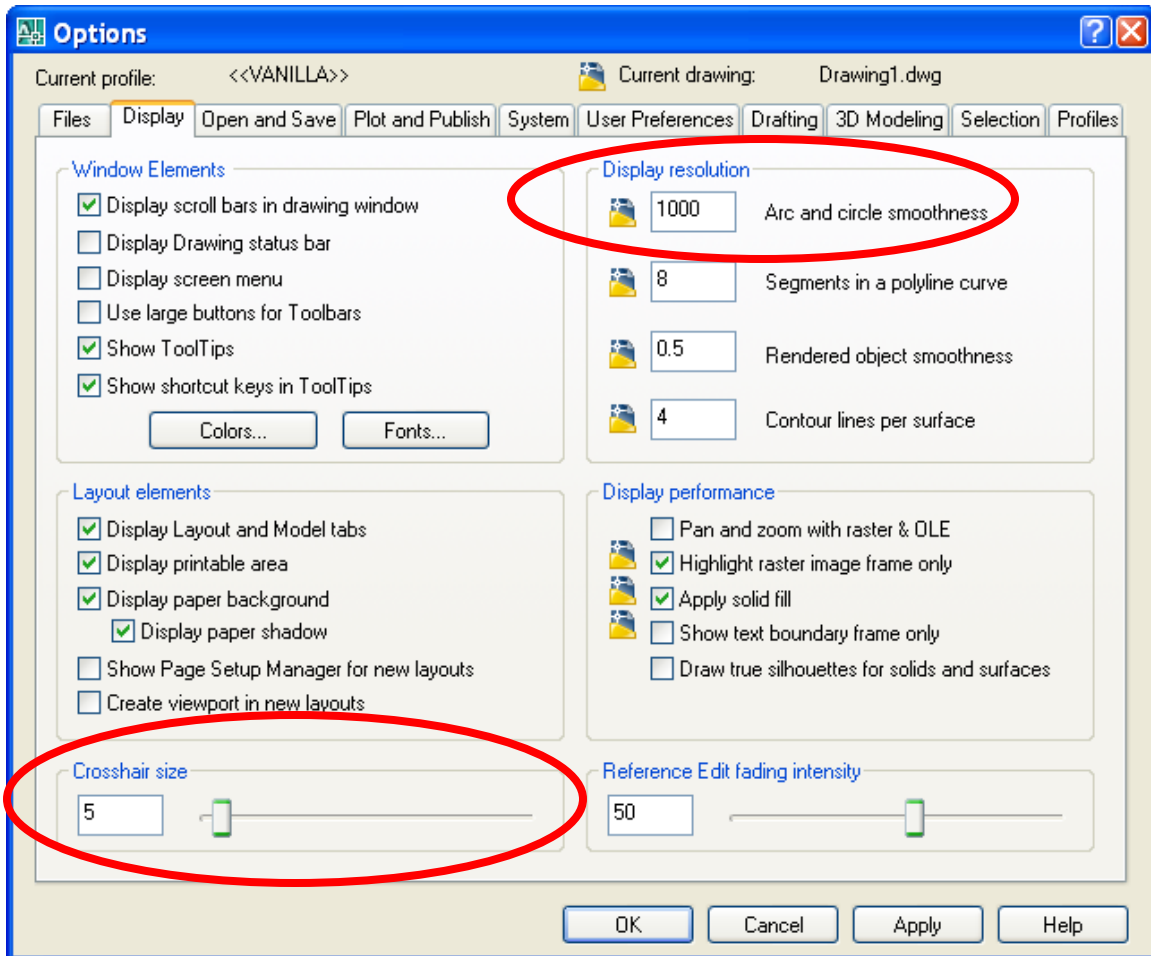
Files



This tab's settings are typically left at the default installation's settings.

For a multi-user site investigate creating main and enterprise CUI files under Customization Files. This allows individual users the opportunity to customize their toolbars and menus without affecting the company standards.

Display

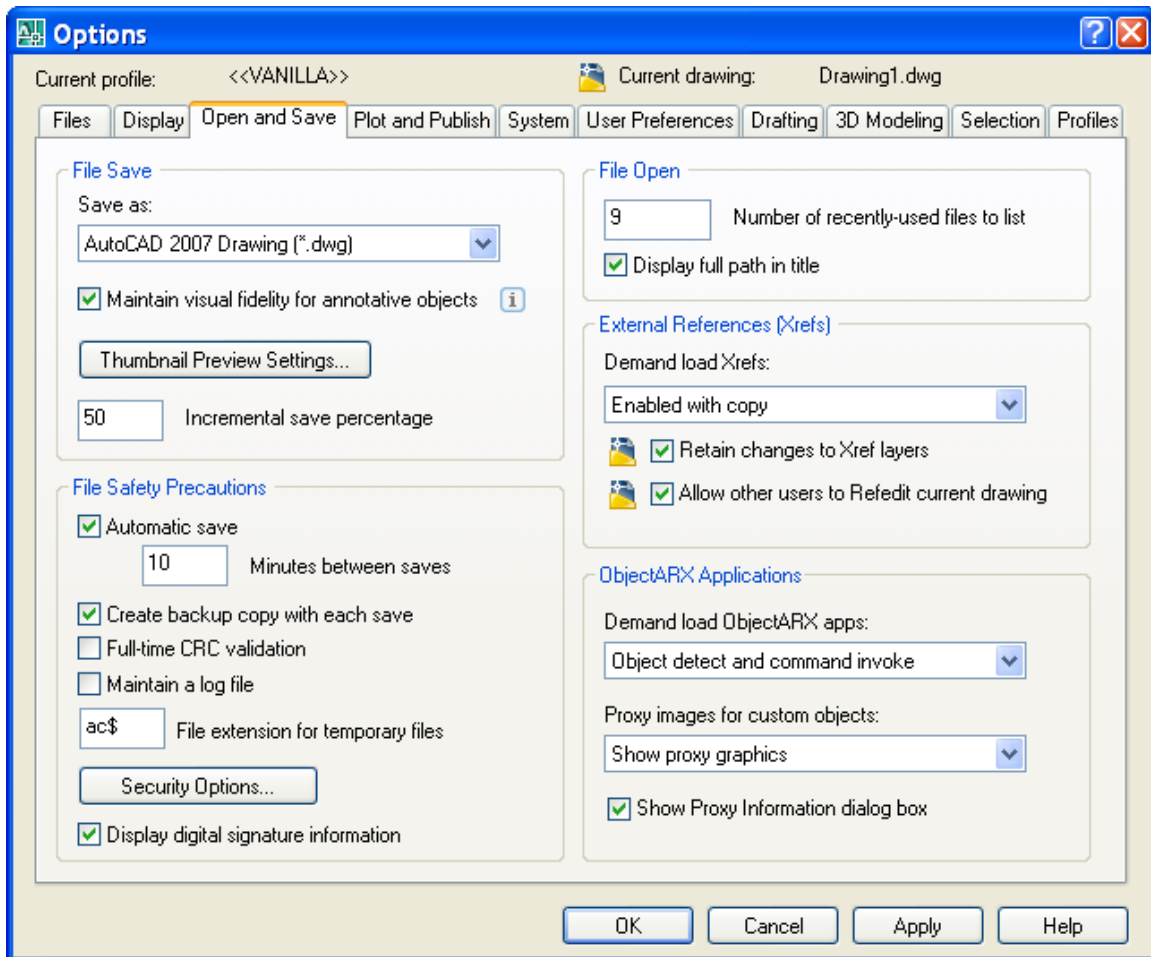


Leave the **Crosshair size** at or near the default 5% of the screen size. With the crosshairs relatively small they don't interfere with the display of the POLAR and OTRACK tracking vectors (see the Drafting tab).

Many users prefer the crosshair size set to 100% (full screen). That was the only choice for many releases and was helpful when aligning items like dimensions. With the smaller crosshair size, use object snap tracking (OTRACK) to line up new dimensions with existing ones.

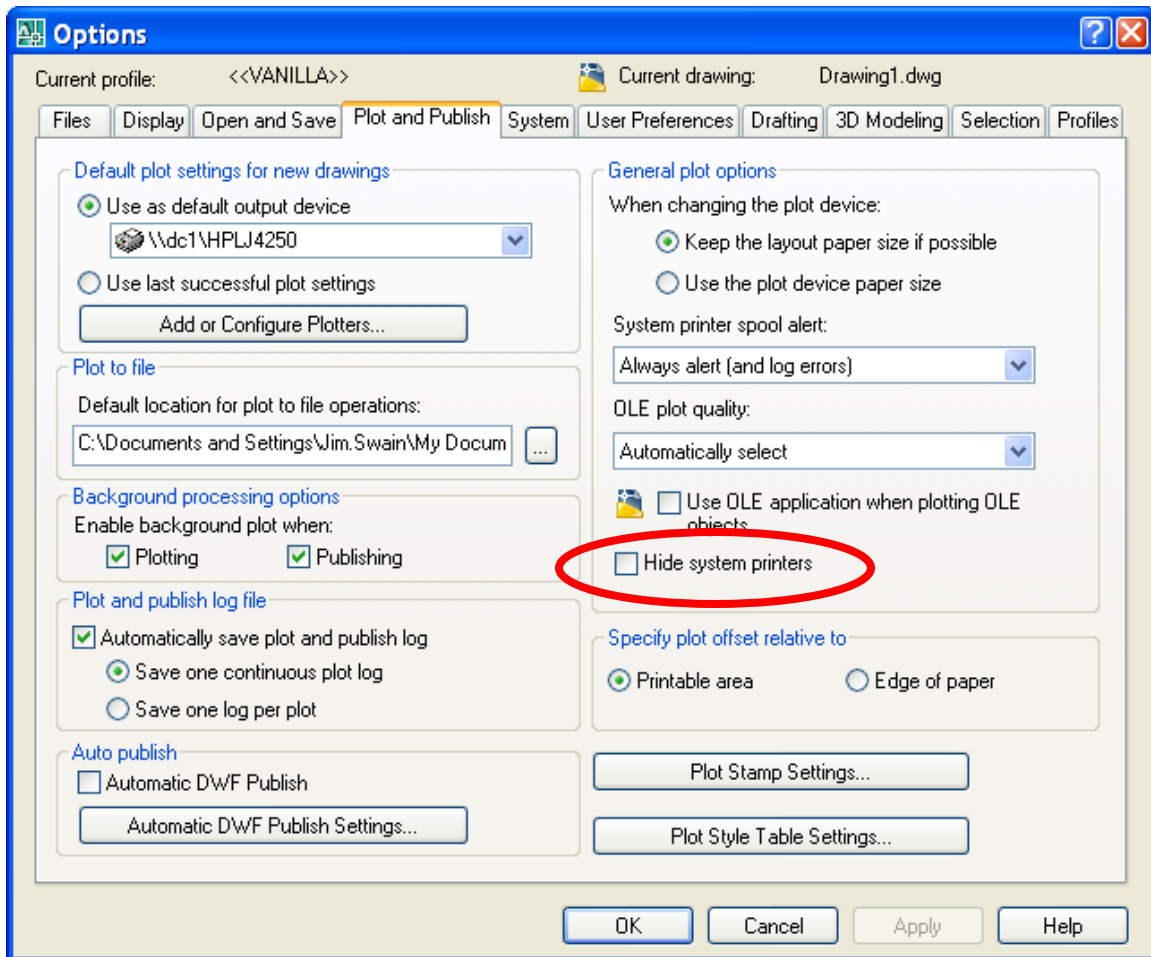
Many users increase the **Arc and circle smoothness** up to values as high as 20000. There can be a noticeable delay when drawing arcs and circles with the value this high. The default template value of 1000 gives a good compromise between display quality and performance.

Open and Save



This tab's settings are left at the default installation's settings.

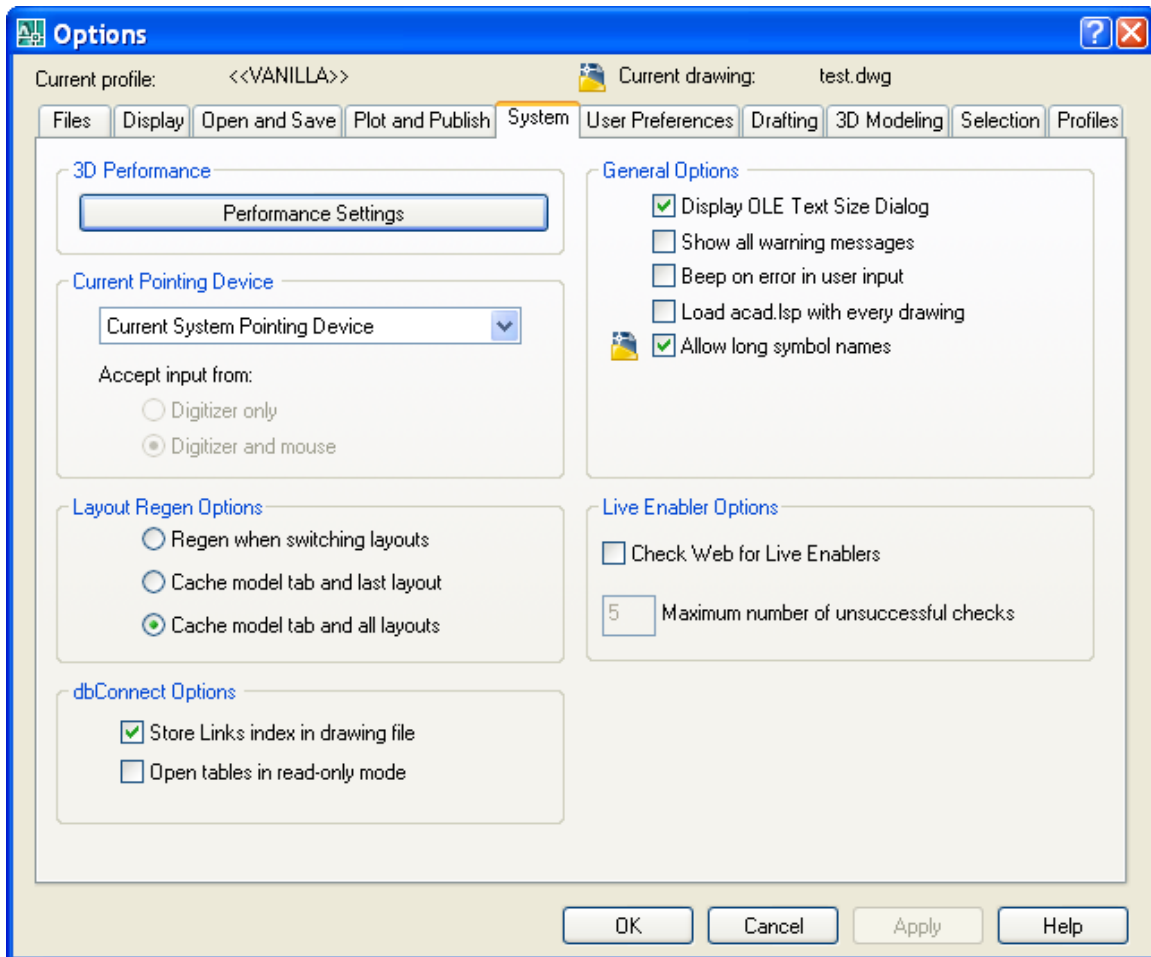
Plot and Publish



This tab's settings are left at the default installation's settings.

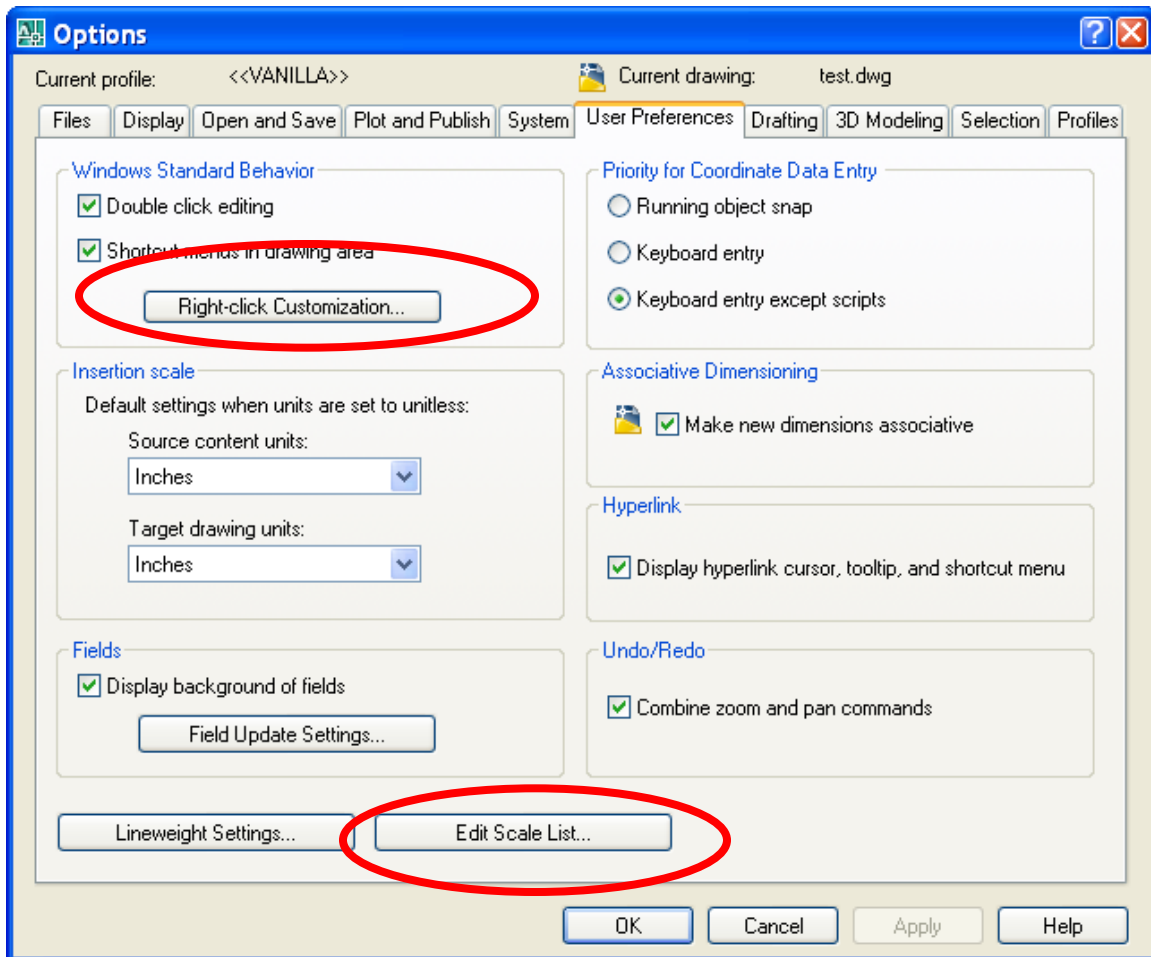
Some companies will turn on the **Hide system printers** check box if they only want AutoCAD to see specific devices and those devices have AutoCAD drivers.

System

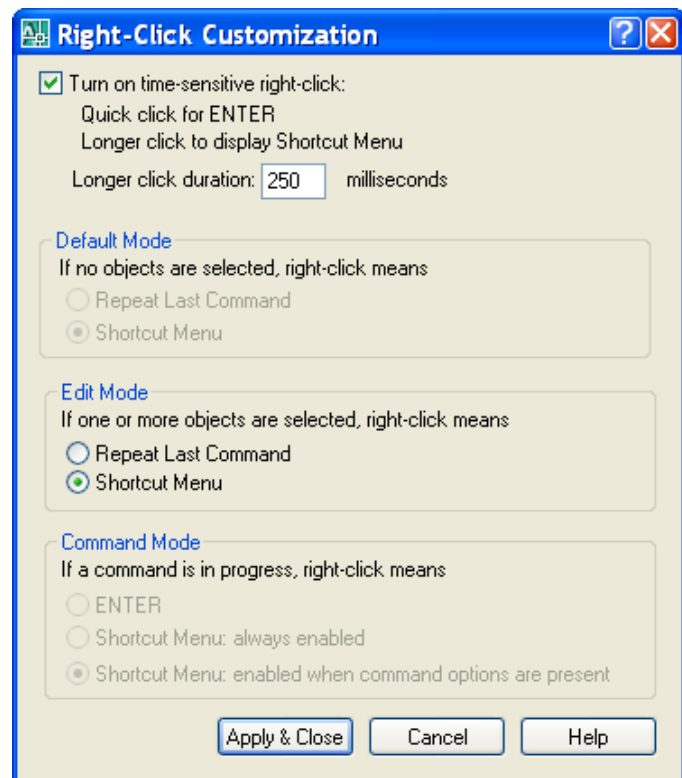


This tab's settings are left at the default installation's settings.

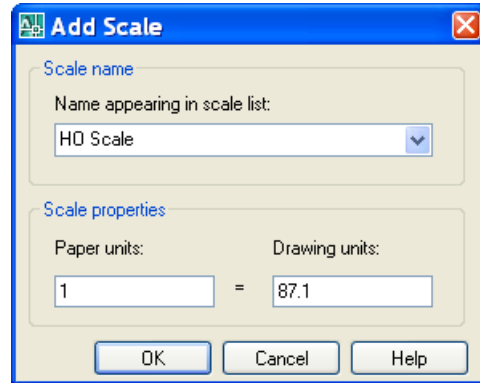
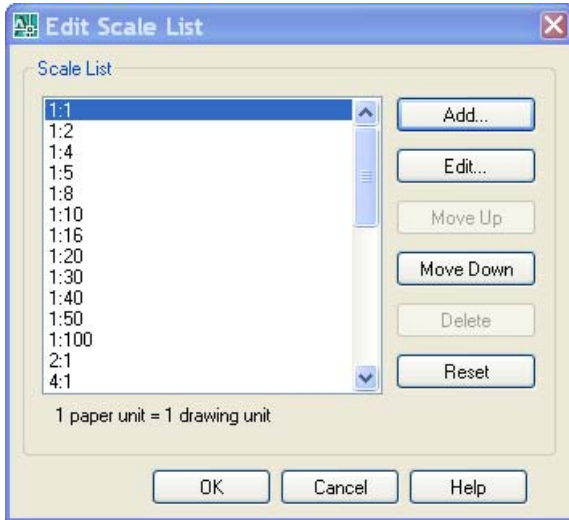
User Preferences



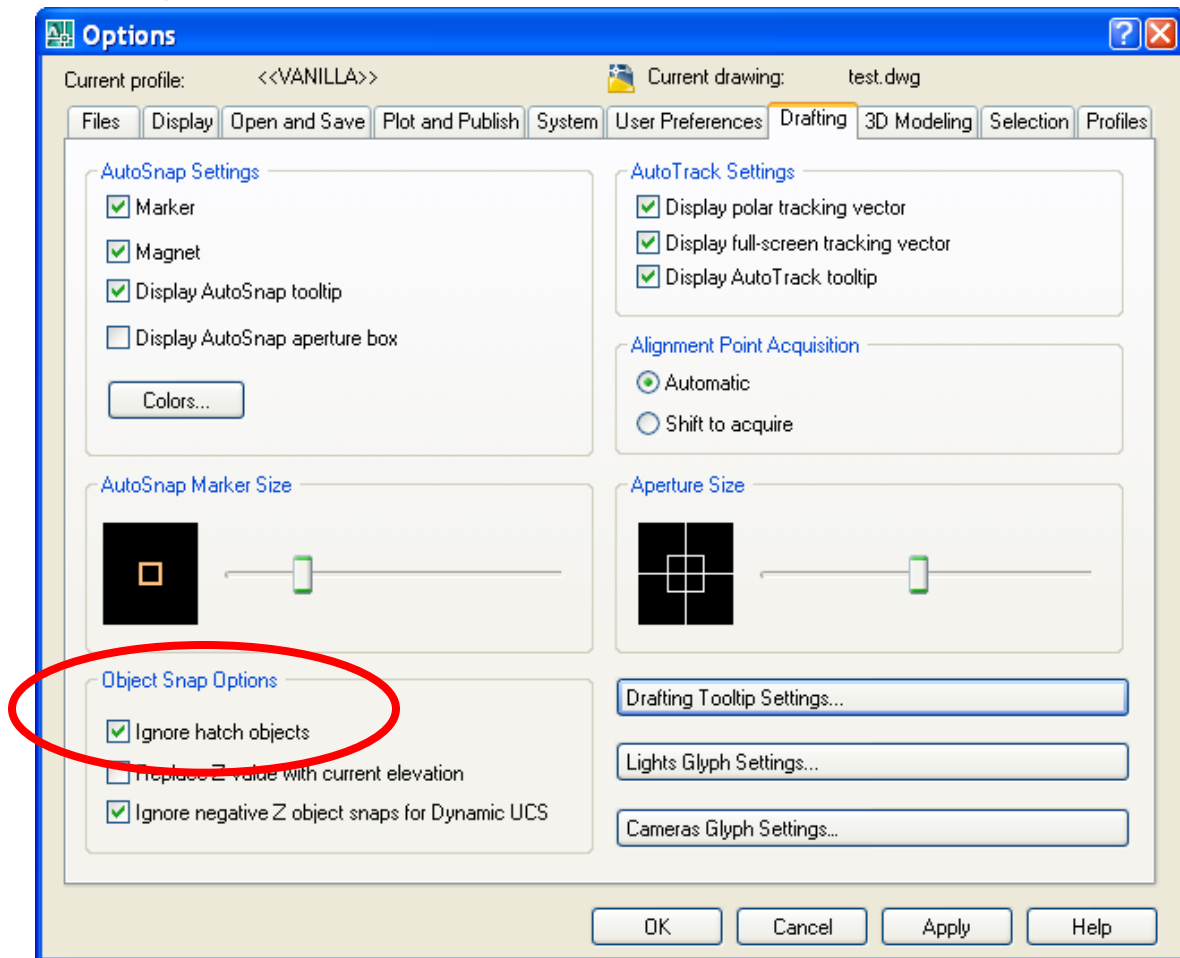
Turn on the time-sensitive right click functionality, accessed by the **Right-click Customization** button. This enables a short right-click, less than a quarter second, to behave as an Enter command. If the right mouse button is held down for longer than a quarter second a context sensitive menu is displayed.



Another suggested change is to edit the scale list. New scales can be added as desired, unnecessary scales can be removed, and the display order can be changed.



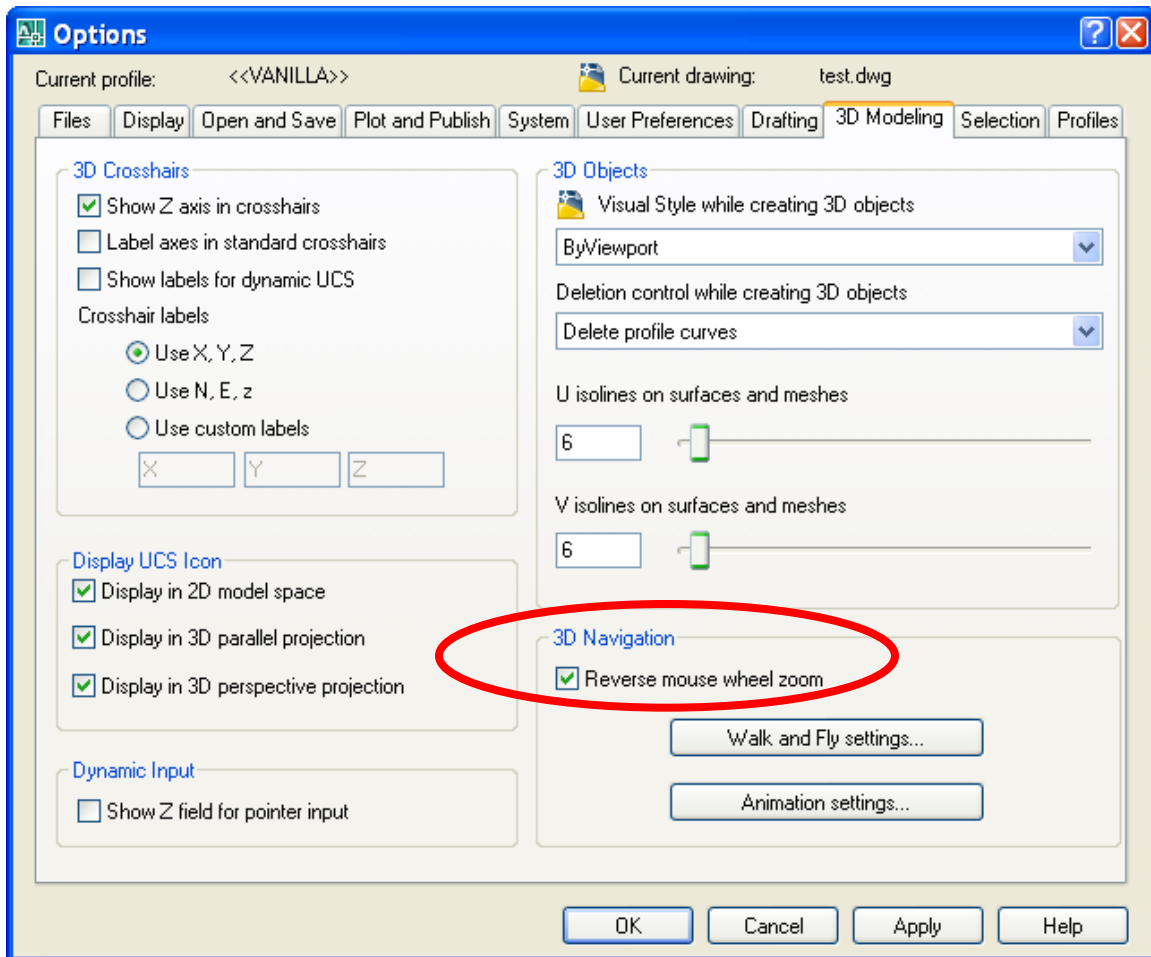
Drafting



This tab's settings are left at the default installation settings. Note that the new check box in the Object Snap Options area: **Ignore hatch objects**. This is on by default. This setting tells AutoCAD to ignore hatch objects when snapping to points. This avoids problems such as snapping to a hatch line when placing dimensions.

The tracking vectors are left on as well. These are the dotted lines that appear when using polar or object snap tracking. While these were first offered in AutoCAD 2000 many users didn't notice them or use them, in part due to using the full screen crosshairs and ORTHO mode. Polar tracking and Object Snap tracking together give the same benefits, and can be set up to give much more. Examples include tracking at 5 degree increments, instead of ORTHO mode's 90 degree limitation.

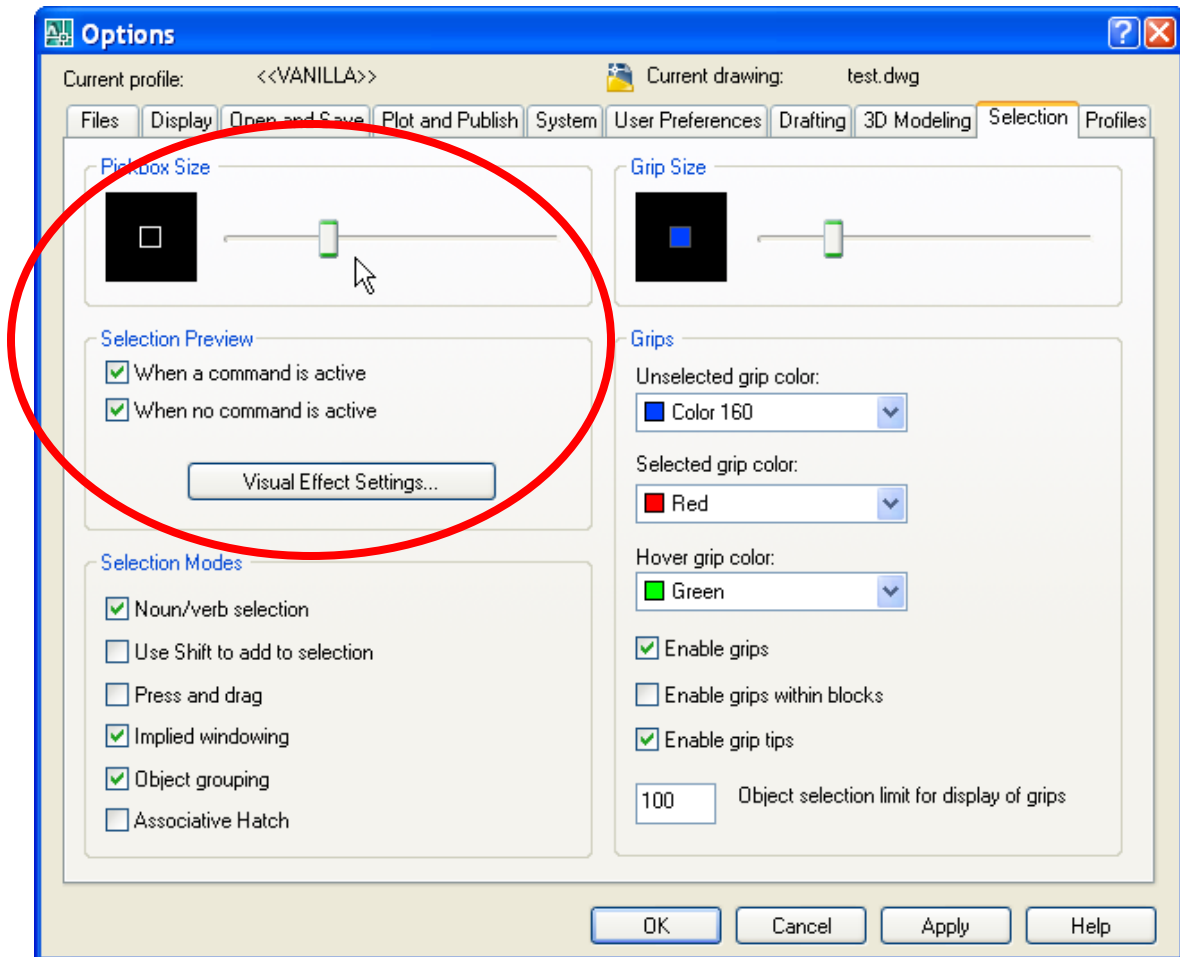
3D Modeling



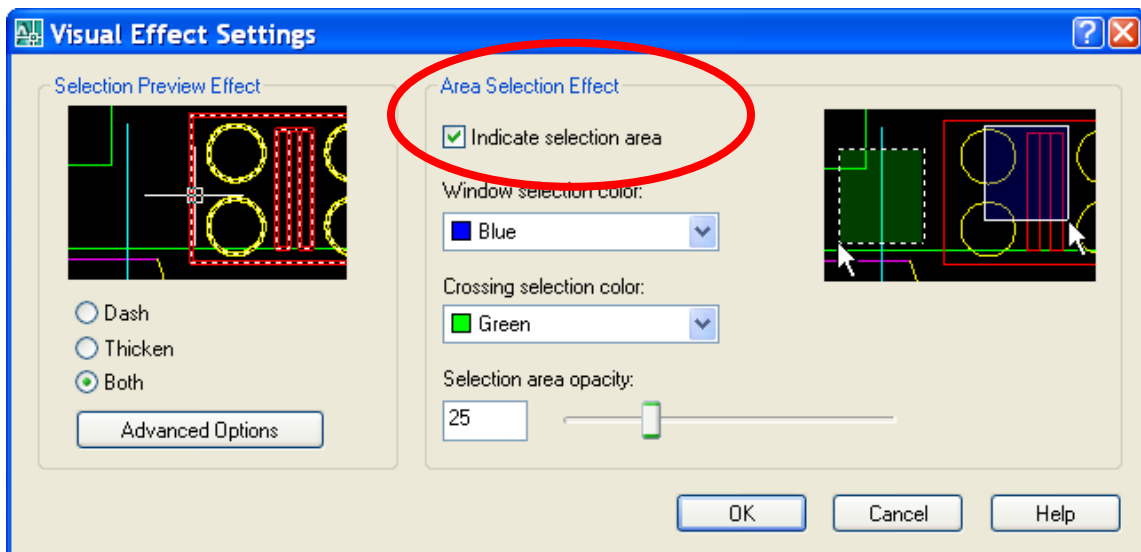
The **Reverse mouse wheel zoom** option has been checked. This changes the way AutoCAD reacts to the wheel rotation. With this checked rolling the wheel “away” from you makes the screen image smaller. This behavior matches the wheel’s behavior in Inventor.

Note: If you are using both programs, and prefer AutoCAD’s wheel zoom behavior, there is a similar setting in Inventor 2008 to switch it’s behavior instead.

Selection

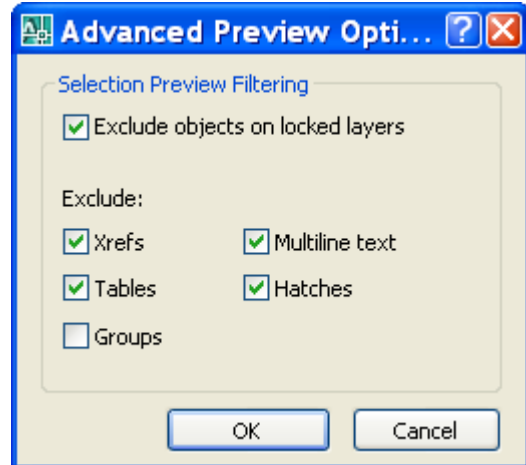


Increase the **Pickbox Size** slightly from the default setting to speed work, as the cursor position isn't as critical when picking objects.



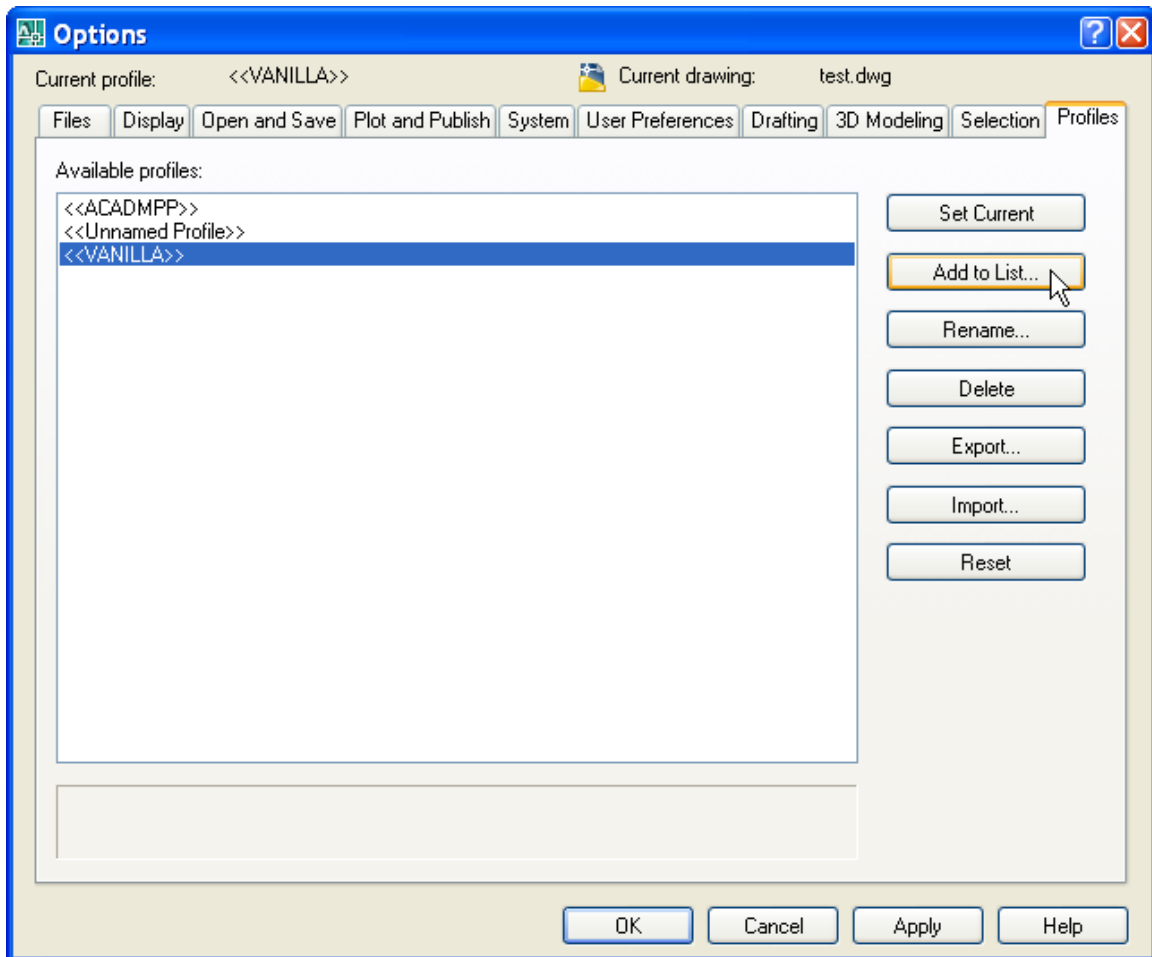
Many long time AutoCAD users prefer to turn off the **Selection Preview options**. These check boxes control whether objects are thickened or dashed when the cursor hovers over them.

A suggestion is to leave them on. The visual effects appear to increase productivity as it is easier to notice what will be selected by a pick. Note that the Advanced Options button brings up a dialog box that will allow you to exclude certain types of objects from this effect. Make sure objects on locked layers and hatch objects are excluded.



You may want to go into the Visual Effect Settings dialog box and turn off the Indicate selection area option. This turns off the display of the blue and green translucent fill for window and crossing selection strokes.

Profiles



Personal profiles can be saved by the Add to List button. The profile stores settings that aren't stored in the drawing file or the Windows registry.

These suggestions incorporate many of the changes in the user interface. Some were in R14 and earlier versions. A number were introduced in R2000. Options are added and removed in each new release. When new versions are installed take a look at the Options dialog box and see what new tools might help you.