



Inventor 11 and Inventor 2008 on same machine sharing ADMS:

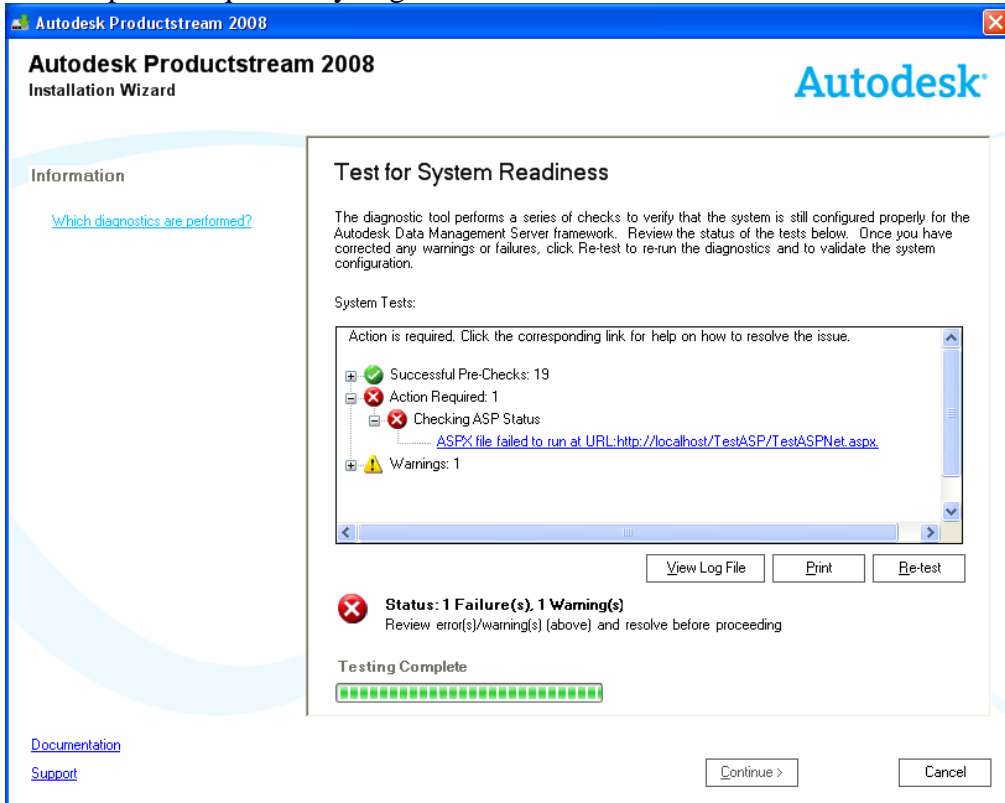
1. Backup Inventor 11 libraries. For example Inventor ANSI.mdf & Inventor ANSI_log.ldf
2. Uninstall Autodesk Vault 5 for Microsoft Office.
3. Uninstall Autodesk Autoloader 5.
4. Uninstall Autodesk Productstream Explorer 5.
5. Uninstall Vault/Productstream 5.
6. Uninstall Autodesk Data Management Server 5.
7. Uninstall Microsoft SQL Server Desktop Engine (AUTODESKVAULT).
8. Manually remove the following folders from these locations (Delete any older folder versions of software as you go through these locations – make sure you have uninstalled them first):
 - a. C:\Documents and Settings\All Users\Application Data\Autodesk\
 - i. Vaultserver (Filestore)
 - b. C:\Documents and Settings\user login\Application Data\Autodesk\
 - i. VaultClient
 - ii. VaultCommon
 - iii. VaultManager
 - iv. Productstream 5.0
 - c. C:\Documents and Settings\ user login\Local Settings\Application Data\Autodesk\
 - i. Check to make sure you do not have old files still here
 - d. C:\Program Files\Autodesk\
 - i. Autodesk Vault 5 for Microsoft Office
 - ii. Autoloader 5
 - iii. Data Management Server 5
 - iv. Productstream 5
 - e. C:\Program Files\Microsoft SQL Server\
 - i. MSSQL\$AUTODESKVAULT
9. Edit the Registry and delete older versions as required – refer to the “Clean Uninstall” document from Autodesk.
10. Install software – see “New Installation Steps” below.
11. Copy Inventor 11 libraries from backup step #1 to “C:\Program Files\Microsoft SQL Server\MSSQL.1\MSSQL\Data\”
12. Open ADMS Console 2008 and do the following:
 - a. Expand Libraries.
 - b. Right-click on Libraries folder and select Attach Libraries...
 - c. Attach each of the Inventor 11 libraries.
13. Open Inventor 11 and do the following:
 - a. Open Projects Dialog Box.
 - b. Click Configure Libraries tool.
 - c. Verify that libraries are available (should appear in black).
 - d. If they do not show use the tool to add each one.

New Installation Steps:

1. Install Inventor 2008 – (w/o Content Center & no Vault)
 - a. Check Autodesk Professional 2008
 - b. Check AutoCAD Mechanical
 - c. Check Autodesk Inventor 11 Client Upgrade for ADMS 2008
2. Verify/Install IIS (Internet Information Services)
3. Install PS2008 & Autodesk Data Management
 - a. If you get the “ASPX...” Action Required see page 2 for the fix.
4. Install Content Center from Inventor disk – make sure you uncheck Vault
5. Install PS2008 Explorer

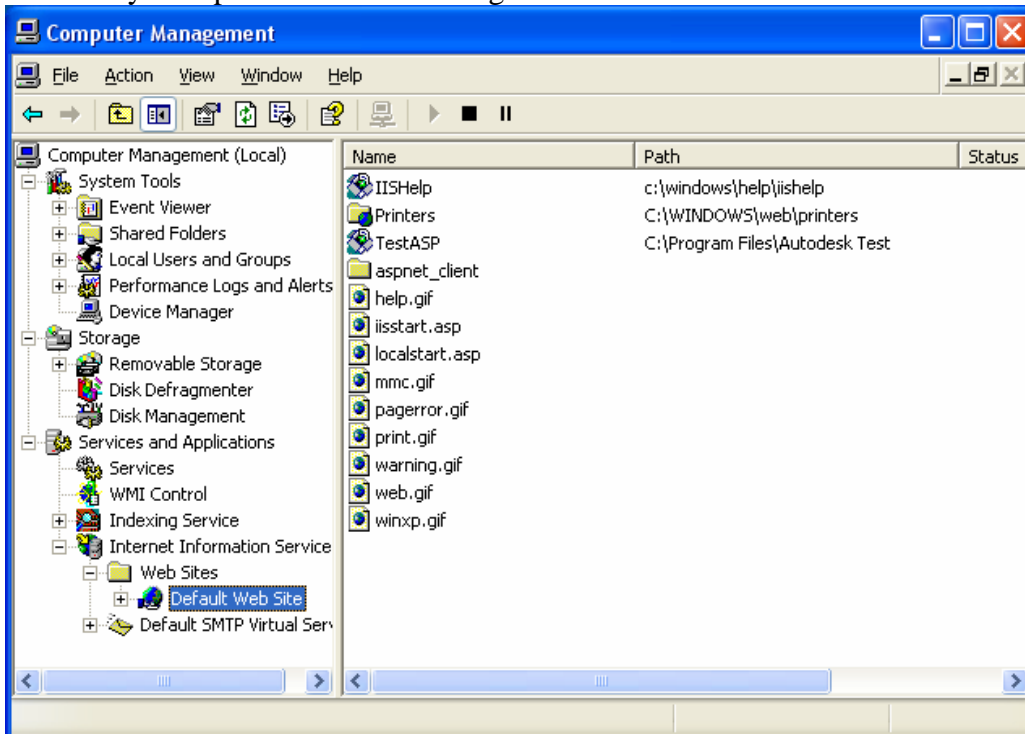


Two steps are required if you get the screen below:



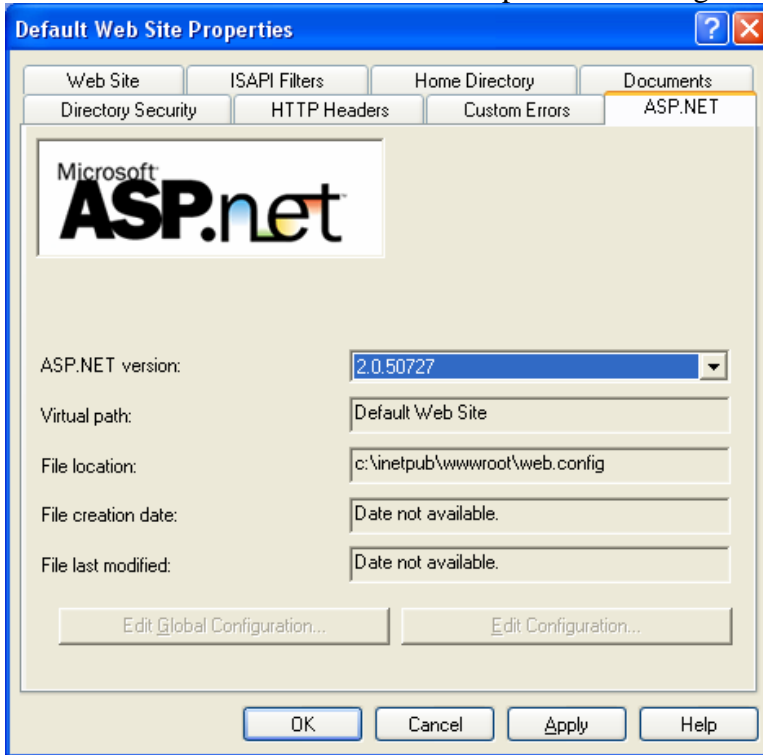
Step 1:

RMB "My Computer" & select Manage:





RMB “Default Web Site & select “Properties” – change ASP.NET version to 2.0.50727:



Step 2:

Start the Command Prompt and run the following:

“c:\windows\microsoft.net\framework\v2.0.50727\aspnet_regiis -i”